



Incorporating

**PANTAENIUS COMMODORES CUP
&
PANTAENIUS PORT STEPHENS
TROPHY**

PASSAGE SERIES

15th – 20th APRIL 2024

Regatta Director: Paul O'Rourke

Event Director: Jennifer Hughes

Regatta Promotions: Mark Rothfield

Protest Chairman: Damien Boldyrew (IJ)

Race Officer: Denis Thompson (IRO)



**NEWCASTLE CRUISING
YACHT CLUB**

SAILING INSTRUCTIONS

Newcastle Cruising Yacht Club (NCYC) as the organising authority will conduct Sail Port Stephens 2024 incorporating Commodores Cup Series and Port Stephens Trophy Series on Port Stephens and nearby waters from Monday 15th to Saturday 20th April 2024.

1. RULES

- 1.1 Sail Port Stephens will be governed by the "rules" as defined in the 2021 - 2024 World Sailing (WS) Racing Rules of Sailing (RRS), Special Regulations of Australian Sailing (AS), the ORC Rule where applicable, except as any of these are changed by the Sailing Instructions (SI).
- 1.2 Alterations to the Rules:
The following alterations have been made to the rules: -
RRS 51: A boat with movable ballast or variable ballast (within the meaning of those terms in the special regulations) may move that ballast for the purpose of changing trim or stability.
RRS 52 is amended to permit powered winches for boats over 14.0m LOA.
- 1.3 Non-Spinnaker Class boats shall sail with a main and one headsail only. A headsail is defined as a sail with the entire luff of the sail attached along a headstay. Boats shall not carry spinnakers or Code Zero sails. A Headsail may be poled out with a whisker pole on the windward side only, except during manoeuvres and short-term changes of course. A whisker pole shall be used in accordance with RRS 50.2.
- 1.4 Backstay flags and hull decals may be provided by the event sponsors. If provided, Backstay flags shall be flown from the backstay at all times whilst racing and hull decals shall be attached to the topsides approximately 500 millimetres from both sides of the bow and 50 millimetres below the gunwale. Boats failing to comply with this sailing instruction may only be protested by the Race Committee. This alters RRS 60.1, 60.3 and 60.5

CLASS FLAGS & BACKSTAY FLAGS

Class	Class Flag	Backstay
Commodores Cup Div 1	Yellow	Yellow
Commodores Cup Div 2	Dark Blue	Dark Blue
Commodores Cup Div 3	Pink	Pink
Commodores Cup Div 4	Green	Green
Commodores Cup Non-Spinnaker	Orange	Orange

1.5 SAFETY

Australian Sailing (AS) Special Regulations Category 5 will apply for all races.

2. ELIGIBILITY

Eligibility is in accordance with the Notice of Race including all amendments.

3. NOTICES TO COMPETITORS

- 3.1 Notices to competitors will be posted to the On-Line Regatta Notice Board, www.sailportstephens.com.au

4. CHANGES IN SAILING INSTRUCTIONS

- 4.1 Will be posted on the Regatta Notice Board at least one (1) hour before the scheduled start time of the first race for which they will take effect.
- 4.2 Changes to the sailing instructions made afloat, or from the marina breakwater starting line during or before a scheduled start, will be indicated by the display of Code Flag 3rd Substitute accompanied by two sound signals. The change will be communicated orally on the designated course VHF channel or in writing by notice on the notice board or by SMS.

5. COMMUNICATION

The Race Committee may broadcast the course to be sailed, names/sail numbers of OCS boats, and/or other information of interest to competitors on VHF channel 69. The Race Committee may also transmit course information by Short Message Service (SMS). Any failure of, or defect in, such a broadcast will not be grounds for redress. This alters RRS 60.1 and 62.

6. SIGNALS MADE ASHORE

- 6.1 Will be displayed from the flagpole at Regatta Headquarters, d'Albora Marina, Nelson Bay.
- 6.2 Code Flag "AP" (Answering Pendant), with two sounds (one sound when lowered) means, "The race is postponed. The Warning Signal will be made not less than 30 minutes after this signal is lowered". (This alters RRS Race Signals "AP")

7. COURSES AND MARKS

- 7.1 The course to be sailed will be selected from the list of courses, Passage Courses, in Appendix "A" and will be indicated by the display of a numeral pennant or course board from or near the starting flagpole.
- 7.2 Commodore Cup Division 1 and Division 2 will sail Course "A" of the nominated course. Commodore Cup Division 3, 4 and Non-Spinnaker Division will sail the Course "B" of the nominated course.

8. SCHEDULE OF EVENTS

Races will be started in the order of:

- Comm Cup Division 1** then
Comm Cup Division 2 then
Comm Cup Division 3 then
Comm Cup Division 4 then
Comm Cup Non-Spinnaker

Commodores Cup & Port Stephens Trophy				
Date	Race no.	Starting area	Course	Time of 1st Warning Signal
MONDAY 15th	1	Start Area "C"	Passage	1055 hrs
TUESDAY 16th	2	Start Area "C"	Passage	
WEDNESDAY 17^h	3	Start Area "C"	Passage	
THURSDAY 18th	LAY DAY ALL DIVISIONS AND CLASSES			
FRIDAY 19th	4	Start Area "C"	Passage	1055 hrs
SATURDAY 20th	5	Start Area "C"	Passage	

The last time for a Warning Signal on Saturday 20th will be 1400hrs.

9. THE START

- 9.1 The starting line is between a flagpole displaying an orange flag on the western breakwater of d'Albora Marina and a black and white inflatable buoy laid to the north (Start Area "C").
- 9.2 Boats starting later than 15 minutes after her starting signal will be scored Did Not Start (DNS). This changes RRS A5.1
- 9.3 A yacht signalled as OCS and attempting to return to start may, at the discretion of the Race Committee, be given an elapsed time penalty of 5 minutes or greater by the Race Committee in lieu of returning to start correctly. If applied, this will be communicated by VHF or on the water by an RC vessel. This alters RRS 29.1 and A5.

10. SHORTENING THE COURSE.

Courses may be shortened at any part of the course. Yachts shall finish between the Race Committee vessel displaying Code Flag "S" and the inflatable mark moored nearby, or the nearest point of land if no mark is laid. This changes RRS 32 and Race Signals.

11. TIME LIMIT

The time limit for all races is 5 hours from the starting signal or sunset whichever is earliest. Boats still racing when her time limit expires will be scored points equal to the number of boats finishing within the time limit plus 30% of the number of starters rounded to the nearest whole number, but no more points than the number of starters. Such boats will be scored Time Limit Expired (TLE). This changes RRS 35, A5.1.

12 THE FINISH

The finishing line will be between a flagpole displaying a blue flag on the western breakwater of d'Albora Marina and a black and white inflatable buoy laid to the north (Start Area "C"). The finish mark may be moved closer to the breakwater after the start.

13. PROTEST AND REQUEST FOR REDRESS

- 13.1 Protests shall be lodged at the Regatta Headquarters, Nelson Bay within 90 minutes of the finish time of the last boat in her class in the last race of the day or the race committee signals no more racing today, whichever is later. Protest forms will be available from Regatta Headquarters.
- 13.2 Notices will be posted within 30 minutes of the protest time limit to inform competitors of hearings in which they are parties or named as a witness. This will constitute official notice to all posted parties. Hearings will be held in the Protest Committee room located at Regatta Headquarters.

- 13.3 RRS 66 is changed by adding: "On her last day of racing, a party to the hearing may ask for a reopening no later than half an hour after being informed of the decision."
- 13.4 In accordance with RRS 64.2 the Jury may award a disqualification or a scoring penalty which may include no penalty.

14 ARBITRATION

- 14.1 Arbitration in accordance with RRS Appendix "T" will be used.
- 14.2 Protests not resolved by Arbitration, for any subsequent protest hearing the penalty given for a breach of a rule of Part 2 may be the arbitration penalty.
- 14.3 The arbitrator may be a member of any subsequent protest committee or may observe and give testimony to the protest committee. This changes RRS 63.3(a).

15. RESULTS

Results will be posted to the On-Line Regatta Notice Board at www.sailportstephens.com.au

16. SCORING SYSTEM

The "Low Point System" RRS Appendix A will apply except all race scores will be counted. One completed race shall constitute a series.

Results will be calculated by the application of the appropriate multiplier of elapsed time (PHS and /or ORC). The boat with the lowest corrected time (after application of scoring penalties, if any) will be placed first and so on.

17. HANDICAPS

- 17.1 Performance based handicaps (PHS) will be issued by Sail Port Stephens Handicap Committee. Performance handicaps may be changed at any time in any series and will not be grounds for redress (this alters RRS 60.1 and 62).
- 17.2 ORC handicaps will be Time on Time General Purpose as stated on each boat's certificate.

18. CHARTS

A current or fully amended paper chart AUS209 or Electronic Chart System (ECS) covering the sailing area shall be carried on board. All electronic chart data is to be downloaded to an ECS or available on a data storage device prior to starting and not dependent on internet or phone service connection.

19. DISCLAIMER OF LIABILITY

- 19.1 All those taking part in races conducted by NCYC do so at their own risk and responsibility.
- 19.2 The NCYC is not responsible for the seaworthiness of a yacht whose entry is accepted or the sufficiency or adequacy of its equipment.
- 19.3 Yacht owners, skippers and crew should be aware that there may be uncharted obstacles under the waters on which races are held. Such uncharted obstacles include reefs, rocks and sand bars which could be a danger to yachts and crews. NCYC accepts no responsibility for any damage to or loss of any yacht or for injury to or death of any crew person which may occur as a result of a collision with any underwater obstacle. All participants compete at their own risk.
- 19.4 Attention is drawn to WS Fundamental Rule 3: Decision to race: "A boat is solely responsible for deciding whether or not to start or to continue racing."

20. TROPHIES

- 20.1 Trophies will be awarded to winners of each division or class in a series.

20.2 Presentation of Prizes and Trophies

Prizes and trophies for Commodores Cup Series and Port Stephens Trophy Series will be presented Sirena Seaside Restaurant (formerly Broughtons), on Saturday 20th April as soon as practical after racing.

20.3 Schedule of Trophies

TROPHY	CLASS	PLACE
Pantaenius Commodores Cup	Division 1 PHS	1 st , 2 nd , 3 rd
Pantaenius Commodores Cup	Division 2 PHS	1 st , 2 nd , 3 rd
Pantaenius Commodores Cup	Division 3 PHS	1 st , 2 nd , 3 rd
Pantaenius Commodores Cup	Division 4 PHS	1 st , 2 nd , 3 rd
Pantaenius Commodores Cup	Non-Spinnaker Division PHS	1 st , 2 nd , 3 rd
Pantaenius Port Stephens Trophy	ORC	1 st , 2 nd , 3 rd

APPENDIX "A"

COURSES & MARKS

1 PASSAGE COURSES (Refer Chart AUS209)

SHALLOW WATER WARNING BUOY

A buoy may be laid to mark a shallow area to the north of Anchorage Marina. This buoy is not a mark of any course and is intended to remind yachts there is shallow water in the vicinity.

1.1 The Course to be sailed will be indicated by the display of a numeral pennant or course board.

1.2 Marks and Course

The tables below show the marks of the course and order in which marks are to be passed and the side each mark is to be rounded.

COURSE MARK	MARK DESCRIPTION
Boondelbah Island	Approx S 32° 42.44', E 152° 13.70'
Boughton Island Mark	White buoy at approx S 32° 38.11', E 152° 18.05'
Cabbage Tree Island	Approx S 32° 41.25', E 152° 13.55'
Channel Banks Mark	Yellow buoy at approx S 32° 41.80', E 152° 04.40'
Corlette Mark	Yellow buoy at approx S 32° 43.38', E 152° 05.35'
Box Beach Mark	Orange buoy at approx S 32° 44.00', E 152° 11.80'
Jimmys Beach	Yellow buoy at approx S 32° 41.26', E 152° 10.22'
Little Island	Approx S 32° 42.06', E 152° 14.54'
Middle Ground Beacon	Approx S 32° 42.66', E 152° 08.72'
Nelson Head A	Yellow buoy at approx S 32° 42.27', E 152° 10.70'
Nelson Head B	Yellow buoy at approx S 32° 42.15', E 152° 10.70'
North Arm Cove Mark	Yellow buoy at approx S 32° 40.93', E 152° 02.53'
Pindimar Mark	Yellow buoy at approx S 32° 41.40', E 152° 05.34'
Providence North Mark	Yellow buoy at approx S 32° 38.18', E 152° 13.38'
Providence South Mark	White buoy at approx S 32° 40.00', E 152° 12.00'
Salamander Mark	Yellow buoy at approx S 32° 42.61', E 152° 04.51'
Shag Rocks	Cardinal Mark at approx S 32° 41.44', E 152° 03.08'
Shoal Bay Resort A	Yellow buoy at approx S 32° 42.70', E 152° 10.27'
Shoal Bay Resort B	Yellow buoy at approx S 32° 42.50', E 152° 10.40'
Soldiers Point	Yellow buoy at approx S 32° 41.53', E 152° 03.73'
South Channel Mark A	Yellow buoy at approx S 32° 42.81', E 152° 07.51'
South Channel Mark B	Yellow buoy at approx S 32° 42.93', E 152° 07.51'
West Arm Mark	Yellow buoy at approx S 32° 41.30', E 152° 01.30'
West Bank	Marker Post at approx S 32° 42.40', E 152° 05.72'
Yacaaba Head	Approx S 32° 41.87', E 152° 12.06'

Course 1 (Indicated by display of Numeral Pennant 1) Three Islands

Course "A"

Distance: 16.5 nm approx

COURSE MARK	REQUIRED SIDE
STARTING LINE	Nelson Bay (as described 9)
Cabbage Tree Island	Starboard
Little Island	Starboard
Boondelbah Island	Starboard
Cabbage Tree Island	Port
Little Island	Starboard
Boondelbah Island	Starboard
FINISH	Nelson Bay (as described 12)

Course "B" Distance: 12.5 nm approx

COURSE MARK	REQUIRED SIDE
STARTING LINE	Nelson Bay (as described 9)
Cabbage Tree Island	Starboard
Little Island	Starboard
Boondelbah Island	Starboard
Cabbage Tree Island	Port
FINISH	Nelson Bay (as described 12)

Course 2 (Indicated by display of Numeral Pennant 2) Pub to Pub**Course "A" Distance: 15.3 nm approx**

COURSE MARK	REQUIRED SIDE
STARTING LINE	Nelson Bay (as described 2.2)
Shoal Bay Resort A	Port
Shoal Bay Resort B	Port
Salamander Mark	Starboard
Channel Banks Mark	Port
Soldiers Point	Starboard
Boondaba Island	Starboard
Corlette Mark	Port
FINISH	Nelson Bay (as described 2.3)

Course "B" Distance: 13.9 nm approx

COURSE MARK	REQUIRED SIDE
STARTING LINE	Nelson Bay (as described 9)
Shoal Bay Resort A	Port
Shoal Bay Resort B	Port
Salamander Mark	Starboard
Channel Banks Mark	Port
Soldiers Point	Starboard
Boondaba Island	Starboard
West Bank	Port
FINISH	Nelson Bay (as described 12)

Course 3 (Indicated by display of Numeral Pennant 3) Explore the Bays**Course "A" Distance: 14.3 nm approx**

COURSE MARK	REQUIRED SIDE
STARTING LINE	Nelson Bay (as described 9)
West Bank	Starboard
North Arm Cove Mark	Port
West Arm Mark	Port
Shag Rocks	Starboard
Boondaba Island	Starboard
Corlette Mark	Port
FINISH	Nelson Bay (as described 12)

Course "B" Distance: 13.1 nm approx

COURSE MARK	REQUIRED SIDE
STARTING LINE	Nelson Bay (as described 9)
West Bank	Starboard
North Arm Cove Mark	Port

West Arm Mark	Port
Shag Rocks	Starboard
Boondaba Island	Starboard
West Bank	Port
FINISH	Nelson Bay (as described 12)

Course 4 (Indicated by display of Numeral Pennant 4)

Course "A" Distance: 16.5 nm approx

COURSE MARK	REQUIRED SIDE
STARTING LINE	Nelson Bay (as described 9)
Little Island	Starboard
Box Beach Mark	Starboard
Cabbage Tree Island	Port
FINISH	Nelson Bay (as described 12)

Course "B" Distance: 12.5 nm approx

COURSE MARK	REQUIRED SIDE
STARTING LINE	Nelson Bay (as described 9)
Little Island	Starboard
Box Beach Mark	Starboard
FINISH	Nelson Bay (as described 12)

Course 5 (Indicated by display of Numeral Pennant 5)

Course A Distance: 16.0 nm approx

COURSE MARK	REQUIRED SIDE
STARTING LINE	Nelson Bay (as described 9)
Shoal Bay Resort A	Port
Shoal Bay Resort B	Port
Jimmys Beach	Starboard
Nelson Head B	Starboard
Salamander Mark	Starboard
Pindimar Mark	Starboard
Corlette Mark	Port
FINISH	Nelson Bay (as described 12)

Course B Distance: 13.8 nm approx

COURSE MARK	REQUIRED SIDE
STARTING LINE	Nelson Bay (as described 9)
Shoal Bay Resort A	Port
Shoal Bay Resort B	Port
Jimmys Beach	Starboard
Nelson Head B	Starboard
West Bank	Starboard
Pindimar Mark	Starboard
West Bank	Port
FINISH	Nelson Bay (as described 12)

Course 6 (Indicated by display of Numeral Pennant 6)

Course "A" (Three laps) Distance: 16.6 nm approx

COURSE MARK	REQUIRED SIDE
STARTING LINE	Nelson Bay (as described 9)
Nelson Head A	Port

Nelson Head B	Port
Middle Ground Beacon	Starboard
South Channel Mark A	Port
South Channel Mark B	Port
Nelson Head A	Port
Nelson Head B	Port
Middle Ground Beacon	Starboard
South Channel Mark A	Port
South Channel Mark B	Port
Nelson Head A	Port
Nelson Head B	Port
Middle Ground Beacon	Starboard
South Channel Mark A	Port
South Channel Mark B	Port
FINISH	Nelson Bay (as described 12)

Course "B" (Two laps)

Distance: 11.4 nm approx

COURSE MARK	REQUIRED SIDE
STARTING LINE	Nelson Bay (as described 9)
Nelson Head A	Port
Nelson Head B	Port
Middle Ground Beacon	Starboard
South Channel Mark A	Port
South Channel Mark B	Port
Nelson Head A	Port
Nelson Head B	Port
Middle Ground Beacon	Starboard
South Channel Mark A	Port
South Channel Mark B	Port
FINISH	Nelson Bay (as described 12)

Course 7 (Indicated by display of Numeral Pennant 7)

Course "A"

Distance: 15.1 nm approx

COURSE MARK	REQUIRED SIDE
STARTING LINE	Nelson Bay (as described 9)
Corlette Mark	Starboard
Soldiers Point	Starboard
Boondaba Island	Starboard
Corlette Mark	Starboard
Soldiers Point	Starboard
Boondaba Island	Starboard
West Bank	Port
FINISH	Nelson Bay (as described 12)

Course "B"

Distance: 13.8 nm approx

COURSE MARK	REQUIRED SIDE
STARTING LINE	Nelson Bay (as described 9)
West Bank	Starboard
Soldiers Point	Starboard
Boondaba Island	Starboard
Corlette Mark	Starboard
Soldiers Point	Starboard
Boondaba Island	Starboard
West Bank	Port
FINISH	Nelson Bay (as described 12)

Course 8 (Indicated by display of Numeral Pennant 8)**All Divisions Distance: 15.7 nm approx**

COURSE MARK	REQUIRED SIDE
STARTING LINE	Nelson Bay (as described 9)
Salamander Mark	Starboard
Pindimar Mark	Starboard
Corlette Mark	Starboard
Salamander Mark	Starboard
Pindimar Mark	Starboard
Corlette Mark	Starboard
Salamander Mark	Starboard
FINISH	Nelson Bay (as described 12)

Course 9 (Indicated by display of Numeral Pennant 9)**All Divisions Distance: 14.1 nm approx**

COURSE MARK	REQUIRED SIDE
STARTING LINE	Nelson Bay (as described 9)
Corlette Mark	Starboard
Pindimar Mark	Port
Salamander Mark	Port
Corlette Mark	Port
Pindimar Mark	Port
Salamander Mark	Port
FINISH	Nelson Bay (as described 12)

Course 10 (Indicated by display of Numeral Pennant 0)**Course "A" Distance: 16.1 nm approx**

COURSE MARK	REQUIRED SIDE
STARTING LINE	Nelson Bay (as described 9)
Corlette Mark	Starboard
Channel Banks Mark	Starboard
Corlette Mark	Starboard
Channel Banks Mark	Starboard
Corlette Mark	Starboard
Channel Banks Mark	Starboard
West Bank	Port
FINISH	Nelson Bay (as described 12)

Course "B" Distance: 12.3 nm approx

COURSE MARK	REQUIRED SIDE
STARTING LINE	Nelson Bay (as described 9)
Corlette Mark	Starboard
Channel Banks Mark	Starboard
Corlette Mark	Starboard
Channel Banks Mark	Starboard
West Bank	Port
FINISH	Nelson Bay (as described 12)

Course 11 (Indicated by display of Course Board)**Distance: 25.1 nm approx**

COURSE MARK	REQUIRED SIDE
STARTING LINE	Nelson Bay (as described 9)
Cabbage Tree Island	Port
Boughton Island Mark	Port

Providence North Mark	Port
Providence South Mark	Port
FINISH	Nelson Bay (as described 12)

Course 12 (Indicated by display of Course Board)

Distance: 18.8 nm approx

COURSE MARK	REQUIRED SIDE
STARTING LINE	Nelson Bay (as described 9)
Cabbage Tree Island	Port
Providence North Mark	Port
Providence South Mark	Port
FINISH	Nelson Bay (as described 12)

Course 13 (Indicated by display of Course Board)

Distance: 15.1 nm approx

COURSE MARK	REQUIRED SIDE
STARTING LINE	Nelson Bay (as described 9)
Cabbage Tree Island	Port
Providence South Mark	Port
FINISH	Nelson Bay (as described 12)

Course 14 (Indicated by display of Course Board)

Distance: 30.7 nm approx

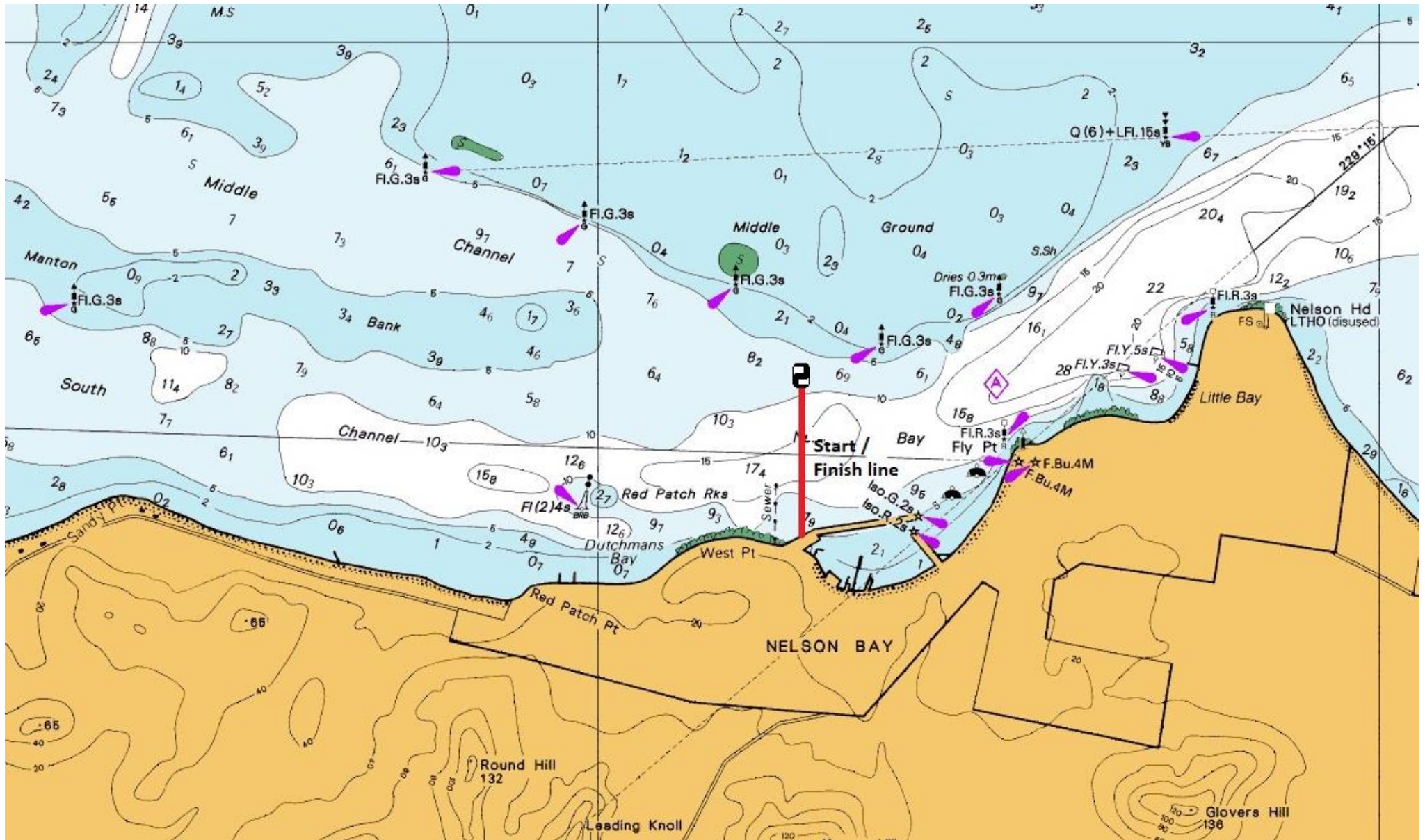
COURSE MARK	REQUIRED SIDE
STARTING LINE	Nelson Bay (as described 9)
Cabbage Tree Island	Port
Boughton Island Mark	Port
Providence South Mark	Port
Cabbage Tree Island	Port
Boughton Island Mark	Port
FINISH	Nelson Bay (as described 12)

Course 15 (Indicated by display of Course Board)

Distance 15.5 nm approx.

COURSE MARK	REQUIRED SIDE
STARTING LINE	Nelson Bay (as described 9)
Nelson Head B	Port
Jimmys Beach	Port
Shoal Bay Resort B	Starboard
South Channel Mark A	Port
Nelson Head B	Port
Jimmys Beach	Port
Shoal Bay Resort B	Starboard
FINISH	Nelson Bay (as described 12)

Port Stephens Commodores Cup Start Area



Port Stephens Laid Marks (indication only)

