



Sail

PORT STEPHENS

COURSE BOOKLET | 2026

AND COMPETITOR INFORMATION



Welcome from the NSW Government



Welcome to the Hunter Region for Sail Port Stephens 2026, which is set to be the biggest and brightest edition in the event's

18-year history, hosted in one of the state's most renowned sailing destinations.

Since the inaugural event, Sail Port Stephens has grown to become one of the nation's biggest regattas, witnessing continued growth in both competitor participation and community engagement.

This year, the event reaches new heights with the introduction of a dynamic regatta village, bringing local families and school holiday visitors closer than ever to the on-water action.

A dedicated grandstand will provide prime viewing of the thrilling race starts, while the largest entertainment line-up in the event's history ensures there is something for everyone to enjoy both on and off the water.

Events like Sail Port Stephens play a vital role in supporting



regional communities, attracting thousands of visitors who stay in hotels, enjoy the fine local dining, and experience the many nearby attractions, supporting businesses and jobs throughout the region.

I wish all competitors the best of luck and encourage visitors to explore the stunning beaches, secluded bays, nearby vineyards and many other unforgettable experiences the beautiful Hunter Region has to offer.

The Hon. Steve Kamper MP
Minister for Sport
Minister for Jobs and Tourism

Strategic Sponsor



Welcome from the Mayor



For the 19th time, we warmly welcome you to Port Stephens for Sail Port Stephens 2026! It's fantastic to see our shores buzzing

with excitement as we host this incredible event once again.

Port Stephens Council has been a proud partner of Sail Port Stephens since the first year, 2007, and we're excited to continue this journey with Paul O'Rourke and his dedicated team.

We're thankful to Destination NSW and the NSW Government for their continued support, allowing us to showcase the beauty of Port Stephens to a global audience through this three-week sailing festival. We've loved being a part of seeing this regatta grow into a highlight of the Australian sailing calendar.

It's wonderful to see such diverse sailing disciplines coming together. Our local volunteers and sailing clubs deserve massive credit for their passion and dedication to promoting and supporting sailing.

Sail Port Stephens also significantly boosts our local economy, benefiting our hotels, marinas, cafes, restaurants, and shops. As part of the festivities, we're proud to be hosting the third Sail Port Stephens Street Party and appreciate the support of everyone who contributes to making this event a success.

While you are here, take time to explore the natural beauty of Port Stephens and enjoy the welcoming vibes of our community.

Our friendly team at the Visitor Information Centre on Victoria Parade, near d'Albora Marina, is ready to help you discover our region's best experiences.

We wish all participants a successful and enjoyable Sail Port Stephens 2026.

May the winds be in your favour, and may you create lasting memories. We look forward to seeing you back in Port Stephens soon!

Leah Anderson
Mayor of Port Stephens

About this course book

This *Course Book* has been developed to provide a single, consistent reference for all racing conducted under Sail Port Stephens 2026. It's intended to be used in conjunction with the event Sailing Instructions. It includes all courses used across the event, including:

- Part A: Passage Courses
- Part B: Windward/Leeward Courses
- Part C: Sprint Course Configurations

The course maps contained in this book are for illustrative purposes only and are not to be used for navigation. Boats are still required to carry navigation charts for the area.

This document is to be used in conjunction with the Sailing Instructions for each event and the online noticeboard for any changes to sailing instructions or notices to competitors.

CREWCONNECT: Competitor communications

Sail Port Stephens is using a WhatsApp group to share key updates with competitors. All crew members – not just the skipper – can receive notifications on.

- Daily briefings
- Course information & race updates
- Results and social schedule
- Important event notices



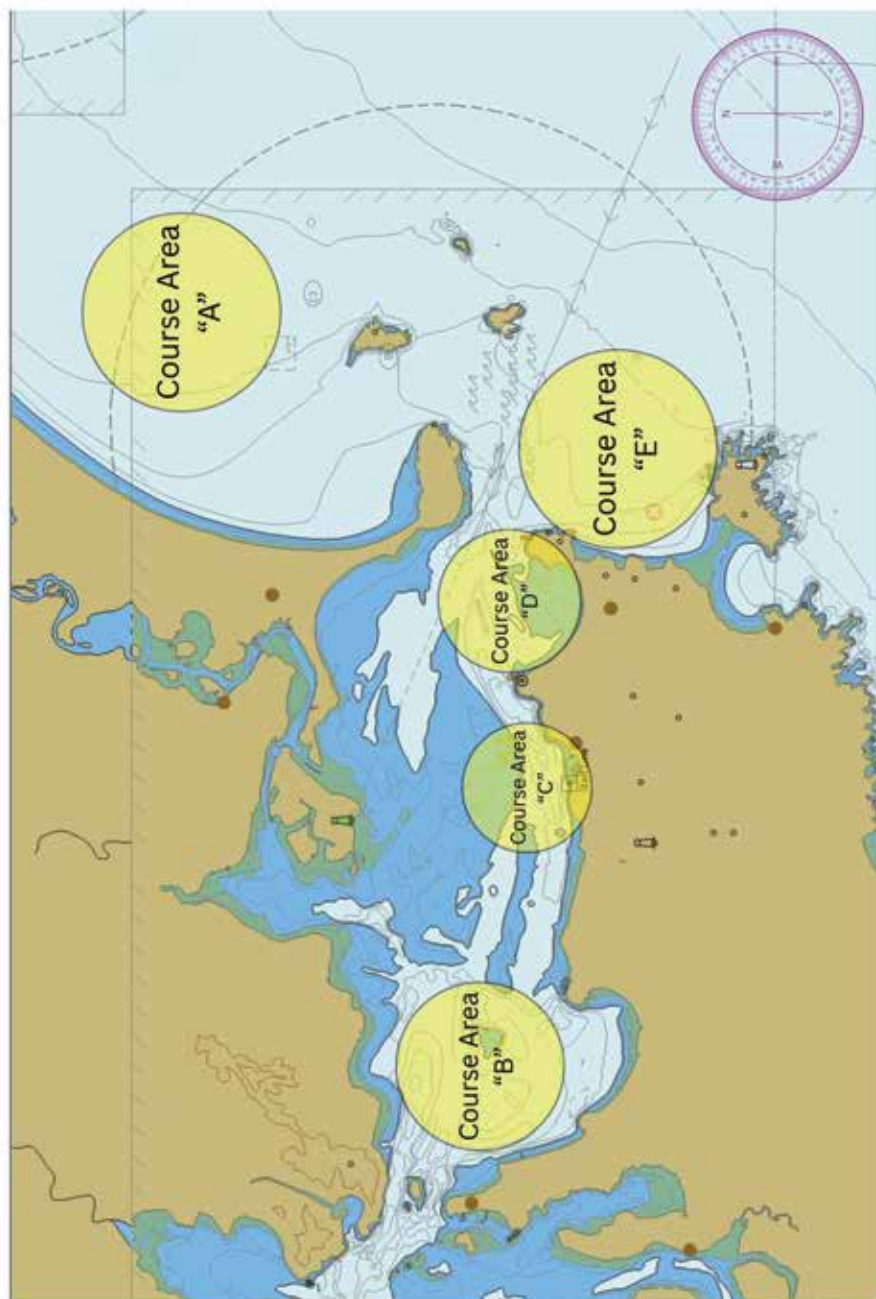
Scan this code
to join

Key features include one-way communication (race committee only), with no chat or replies and no clutter – just important updates.

crewconnect

**Course &
Starting Areas**

This diagram shows approximate locations which may be used for Starting Areas for passage races or Course Areas for windward/leeward and sprint racetracks.



Part A: Passage Courses

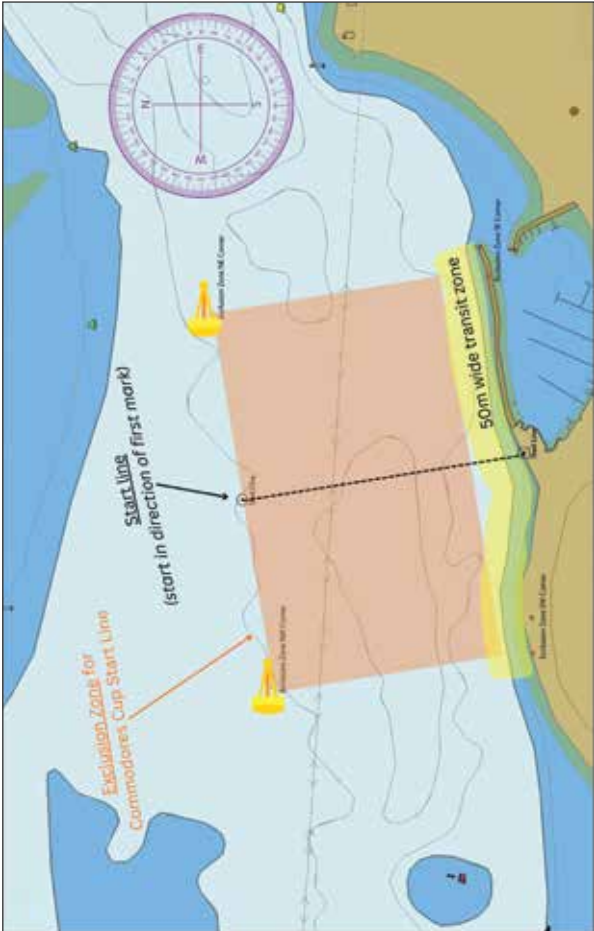
The marks listed in the table below define the buoy and island marks that may be used in Passage Courses.

Marks shall be rounded or passed on the side specified in the relevant course description. (P) indicates a port rounding and (S) indicates a starboard rounding.

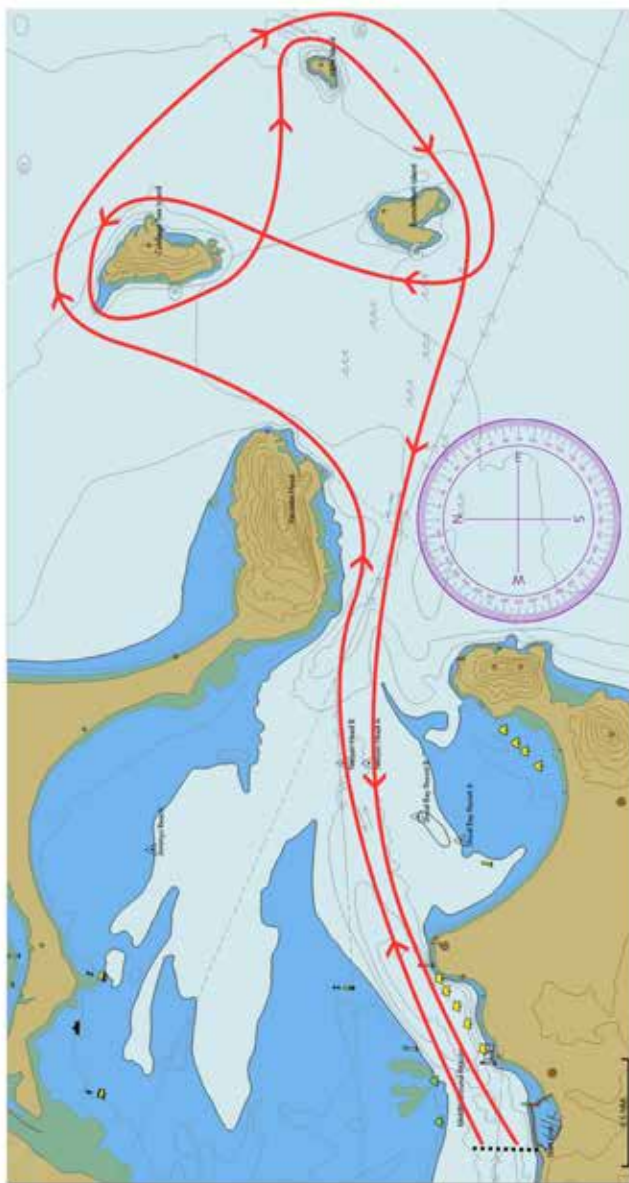
COURSE MARK	MARK DESCRIPTION
Bannisters Mark	Yellow buoy at approx S 32° 42.61', E 152° 04.51'
Boondelbah Island	Approx S 32° 42.44', E 152° 13.70'
Broughton Island Mark	White buoy at approx S 32° 38.11', E 152° 18.05'
Cabbage Tree Island	Approx S 32° 41.25', E 152° 13.55'
Channel Banks Mark	Yellow buoy at approx S 32° 41.80', E 152° 04.40'
Corlette Mark	Yellow buoy at approx S 32° 43.38', E 152° 05.35'
Box Beach Mark	Orange buoy at approx S 32° 44.00', E 152° 11.80'
Jimmys Beach	Yellow buoy at approx S 32° 41.26', E 152Q 10.22'
Little Island	Approx S 32° 42.06', E 152° 14.54'
Middle Ground Beacon	Approx S 32° 42.66', E 152° 08.72'

COURSE MARK	MARK DESCRIPTION
Nelson Head A	Yellow buoy at approx S 32° 42.27', E 152° 10.70'
Nelson Head B	Yellow buoy at approx S 32° 42.15', E 152° 10.70'
North Arm Cove Mark	Yellow buoy at approx S 32° 40.93', E 152° 02.53'
Pindimar Mark	Yellow buoy at approx S 32° 41.40', E 152° 05.34'
Providence North Mark	Yellow buoy at approx S 32° 38.18', E 152° 13.38'
Providence South Mark	White buoy at approx S 32° 40.00', E 152° 12.00'
Shag Rocks	Cardinal Mark at approx S 32° 41.44', E 152° 03.08'
Shoal Bay Resort A	Yellow buoy at approx S 32° 42.70', E 152° 10.27'
Shoal Bay Resort B	Yellow buoy at approx S 32° 42.50', E 152° 10.40'
Soldiers Point	Yellow buoy at approx S 32° 41.53', E 152° 03.73'
South Channel Mark A	Yellow buoy at approx S 32° 42.81', E 152° 07.51'
South Channel Mark B	Yellow buoy at approx S 32° 42.93', E 152° 07.51'
West Arm Mark	Yellow buoy at approx S 32° 41.30', E 152° 01.30'
West Bank	Marker Post at approx S 32° 42.40', E 152° 05.72'
Yacaaba Head	Approx S 32° 41.87', E 152° 12.06'

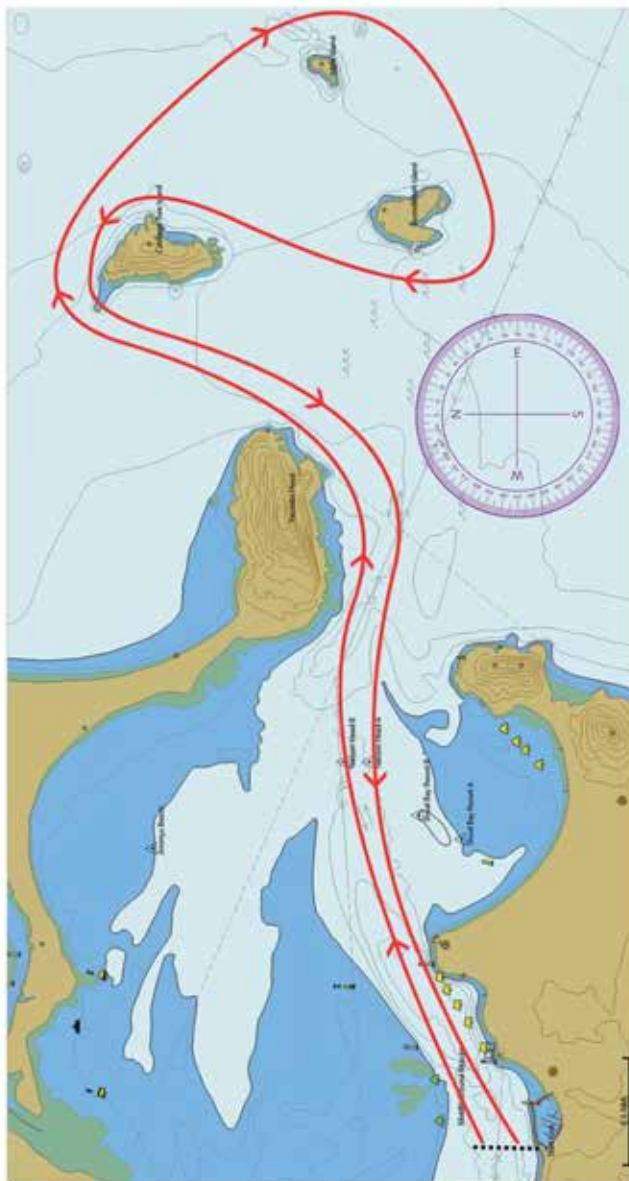
Course	Passage Race Start Line - Starting Area C
Start Line	Between an orange staff displayed ashore and a black/white check mark opposite.
Notes	<p>There is an exclusion zone for the starting line in force from 10:00am-12:30pm for all Commodores Cup races. Along the shoreline there is a 50m wide lane for public vessel transit.</p> <p>See Notice to Mariners published by Transport for NSW for more information regarding the exclusion zone.</p>



Course	Passage 1 'A'
Length	16.5 NM
Description	START - Cabbage Tree Island (S) - Little Island (S) - Boondelbah Island (S) - Cabbage Tree Island (P) - Little Island (S) - Boondelbah Island (S) - FINISH



Course	Passage 1 'B'
Length	12.5 NM
Description	START - Cabbage Tree Island (S) - Little Island (S) - Boondelbah Island (S) - Cabbage Tree Island (P) - FINISH



Course	Passage 2 'A'
Length	15.3 NM
Description	START - Shoal Bay Resort A (P) - Shoal Bay Resort B (P) - Bannisters Mark (S) - Channel Banks Mark (P) - Soldiers Point Mark (S) - Boondaba Island (S) - Corlette Mark (P) - West Bank (P) - FINISH



Course	Passage 2 'B'
Length	13.9 NM
Description	START - Shoal Bay Resort A (P) - Shoal Bay Resort B (P) - Bannisters Mark (S) - Channel Banks Mark (P) - Soldiers Point Mark (S) - Boondaba Island (S) - West Bank (P) - FINISH



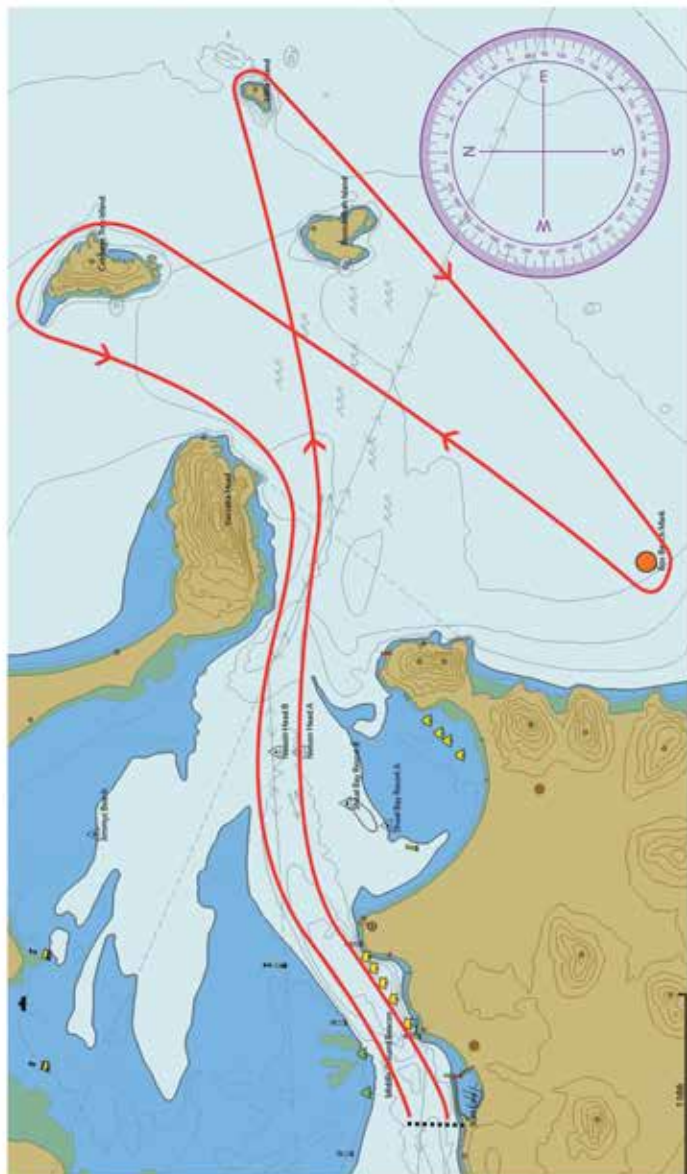
Course	Passage 3 'A'
Length	14.3 NM
Description	START - West Bank (S) - North Arm Cove Mark (P) - West Arm Mark (P) - Shag Rocks (S) - Boondaba Island (S) - Corlette Mark (P) - FINISH



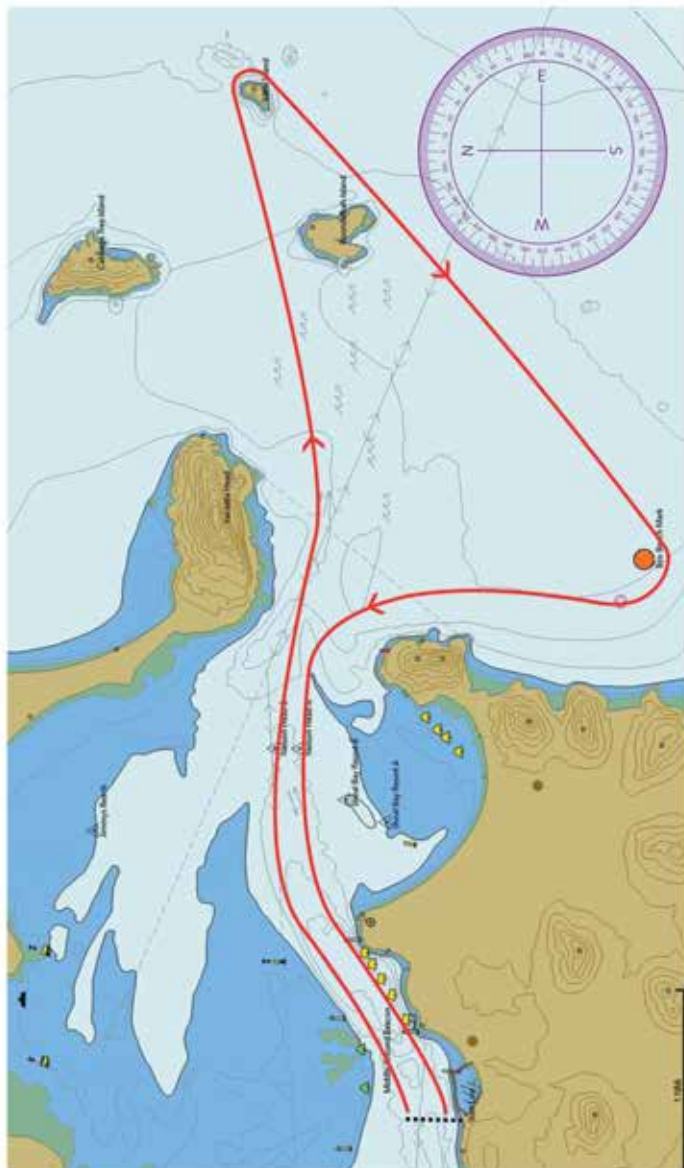
Course	Passage 3 'B'
Length	13.1 NM
Description	START - West Bank (S) - North Arm Cove Mark (P) - West Arm Mark (P) - Shag Rocks (S) - Boondaba Island (S) - FINISH



Course	Passage 4 'A'
Length	16.5 NM
Description	START - Little Island (S) - Box Beach Mark (S) - Cabbage Tree Island (P) - FINISH



Course	Passage 4 'B'
Length	12.5 NM
Description	START - Little Island (S) - Box Beach Mark (S) - FINISH



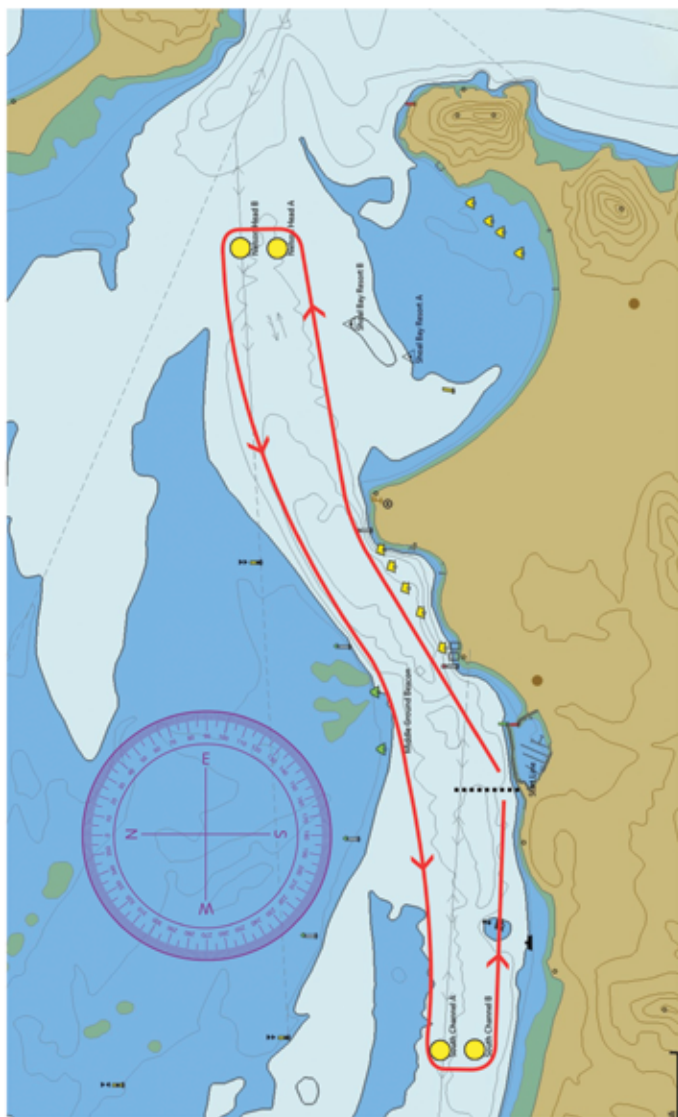
Course	Passage 5 'A'
Length	16.0 NM
Description	START - Shoal Bay Resort A (P) - Shoal Bay Resort B (P) - Jimmys Beach (S) - Nelson Head B (S) - Bannisters Mark (S) - Pindimar Mark (S) - Corlette Mark (P) - FINISH



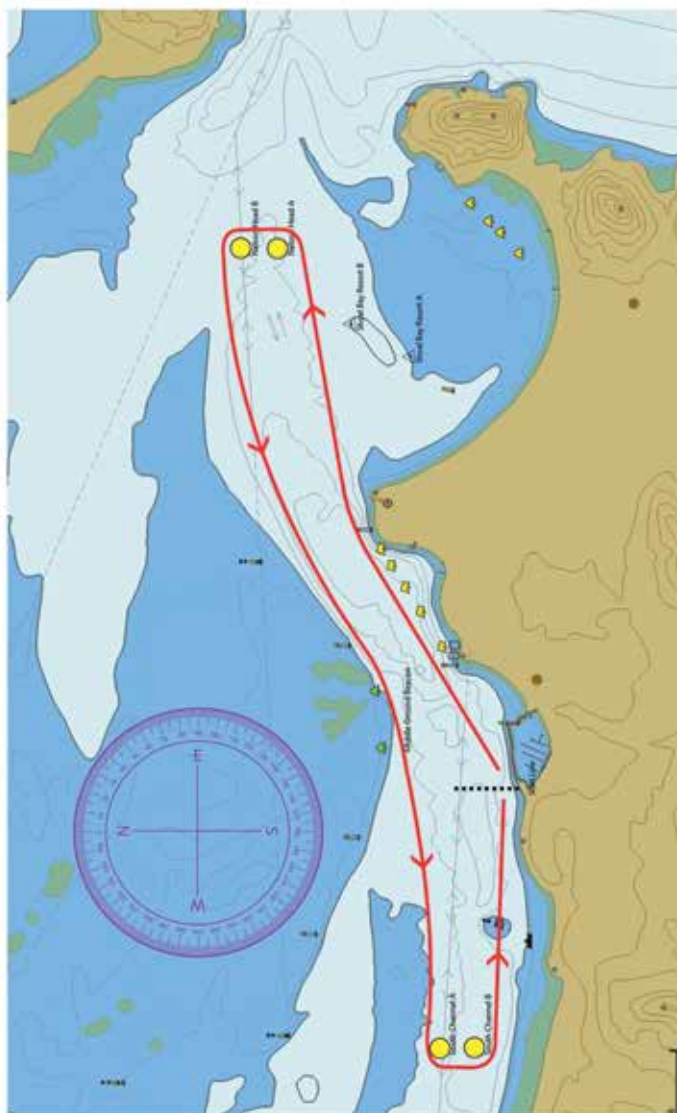
Course	Passage 5 'B'
Length	13.8 NM
Description	START - Shoal Bay Resort A (P) - Shoal Bay Resort B (P) - Jimmys Beach (S) - Nelson Head B (S) - West Bank (S) - Pindimar Mark (S) - West Bank (P) - FINISH



Course	Passage 6 'A' (Three Laps)
Length	16.6 NM
Description	START - Nelson Head A (P) - Nelson Head B (P) - Middle Ground Beacon (S) - South Channel A (P) - South Channel B (P) - Nelson Head A (P) - Nelson Head B (P) - Middle Ground Beacon (S) - South Channel A (P) - South Channel B (P) - Nelson Head A (P) - Nelson Head B (P) - Middle Ground Beacon (S) - South Channel A (P) - South Channel B (P) - FINISH



Course	Passage 6 'B' (Two Laps)
Length	11.4 NM
Description	START - Nelson Head A (P) - Nelson Head B (P) - Middle Ground Beacon (S) - South Channel A (P) - South Channel B (P) - Nelson Head A (P) - Nelson Head B (P) - Middle Ground Beacon (S) - South Channel A (P) - South Channel B (P) - FINISH



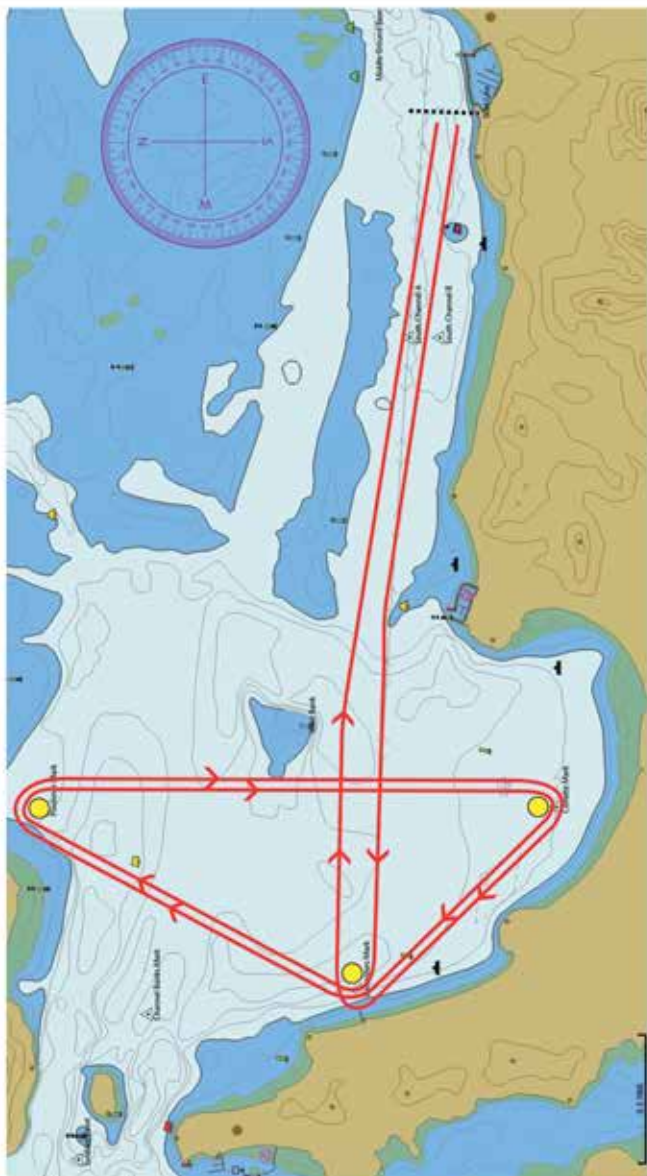
Course	Passage 7 'A'
Length	15.1 NM
Description	START - Corlette Mark (S) - Soldiers Point Mark (S) - Boondaba Island (S) - - Corlette Mark (S) - Soldiers Point Mark (S) - Boondaba Island (S) - West Bank (P) - FINISH



Course	Passage 7 'B'
Length	13.8 NM
Description	START - West Bank (S) - Soldiers Point Mark (S) - Boondaba Island (S) - Corlette Mark (S) - Soldiers Point Mark (S) - Boondaba Island (S) - West Bank (P) - FINISH



Course	Passage 8
Length	15.7 NM
Description	START - Bannisters Mark (S) - Pindimar Mark (S) - Corlette Mark (S) - Bannisters Mark (S) - Pindimar Mark (S) - Corlette Mark (S) - Bannisters Mark (S) - FINISH



Course	Passage 9
Length	14.1 NM
Description	START - Corlette Mark (S) - Pindimar Mark (P) - Bannisters Mark (P) - Corlette Mark (P) - Pindimar Mark (P) - Bannisters Mark (P) - FINISH



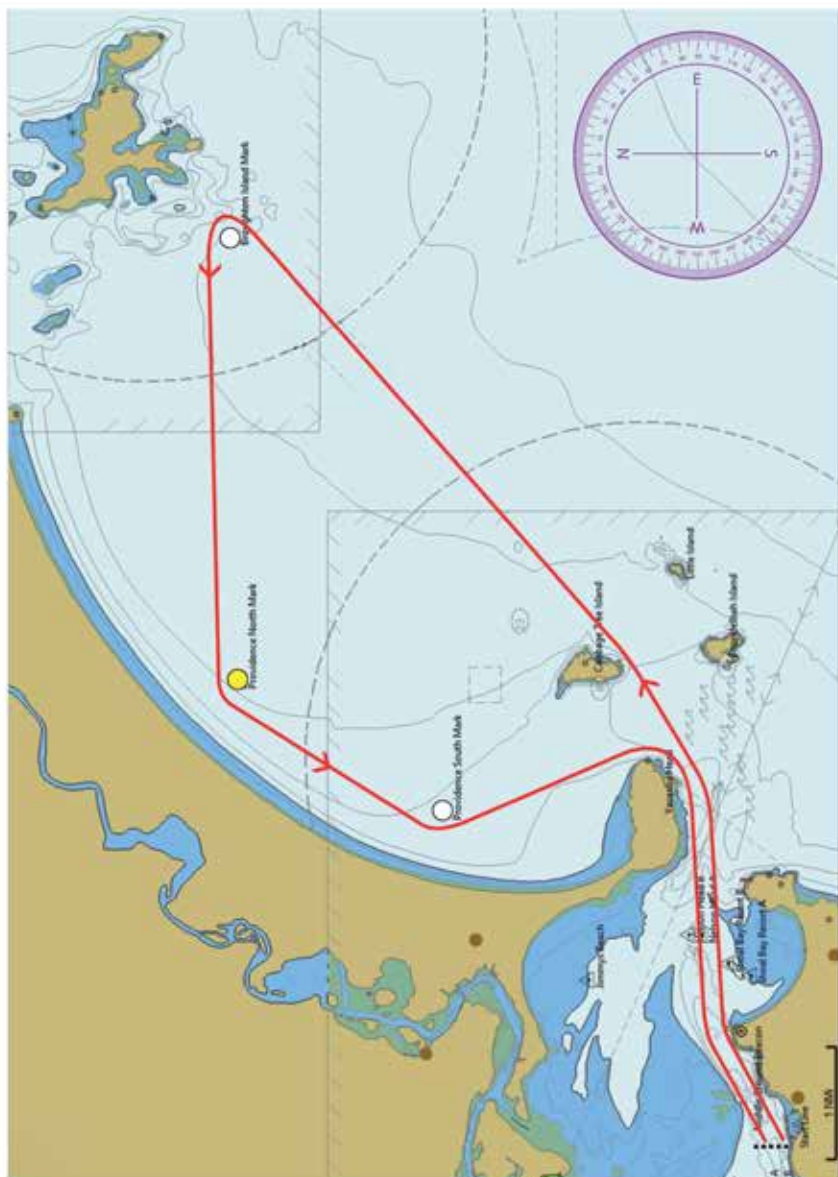
Course	Passage 10 'A'
Length	16.1 NM
Description	START - Corlette Mark (S) - Channel Banks Mark (S) - Corlette Mark (S) - Channel Banks Mark (S) - Corlette Mark (S) - Channel Banks Mark (S) - West Bank (P) - FINISH



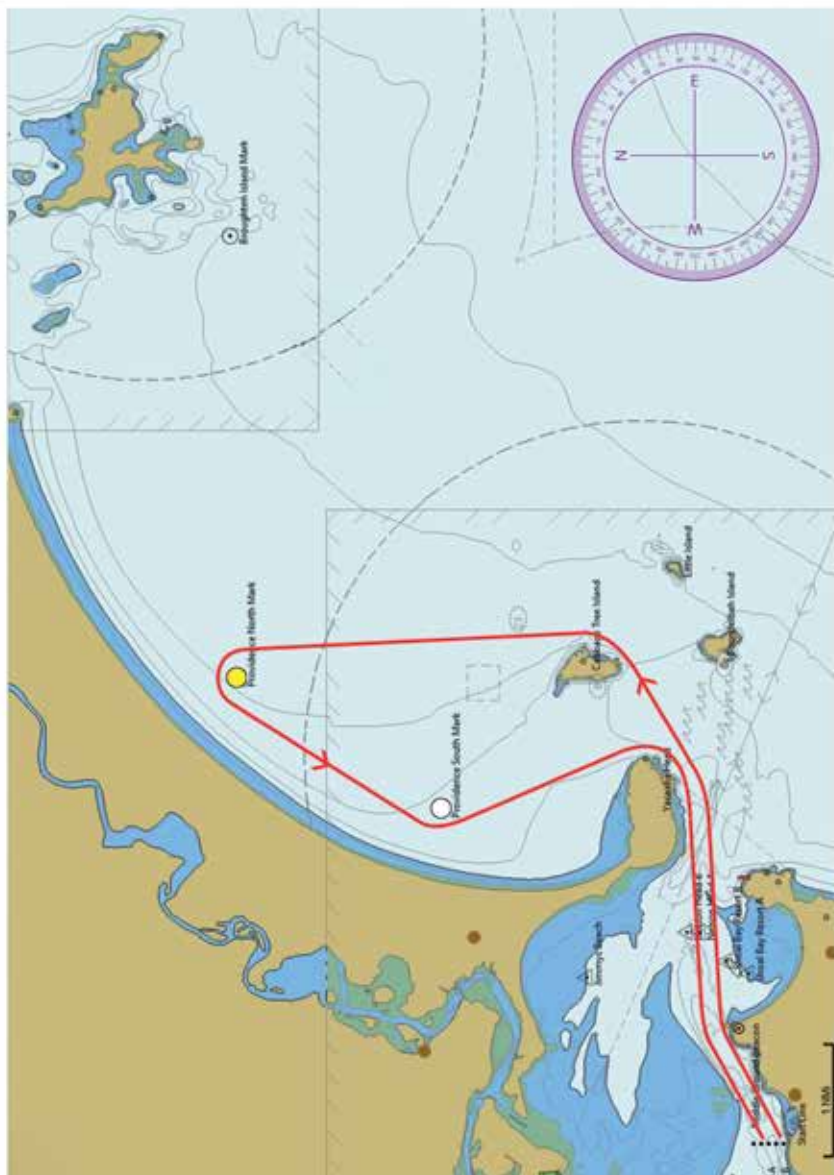
Course	Passage 10 'B'
Length	12.3 NM
Description	START - Corlette Mark (S) - Channel Banks Mark (S) - Corlette Mark (S) - Channel Banks Mark (S) - West Bank (P) - FINISH



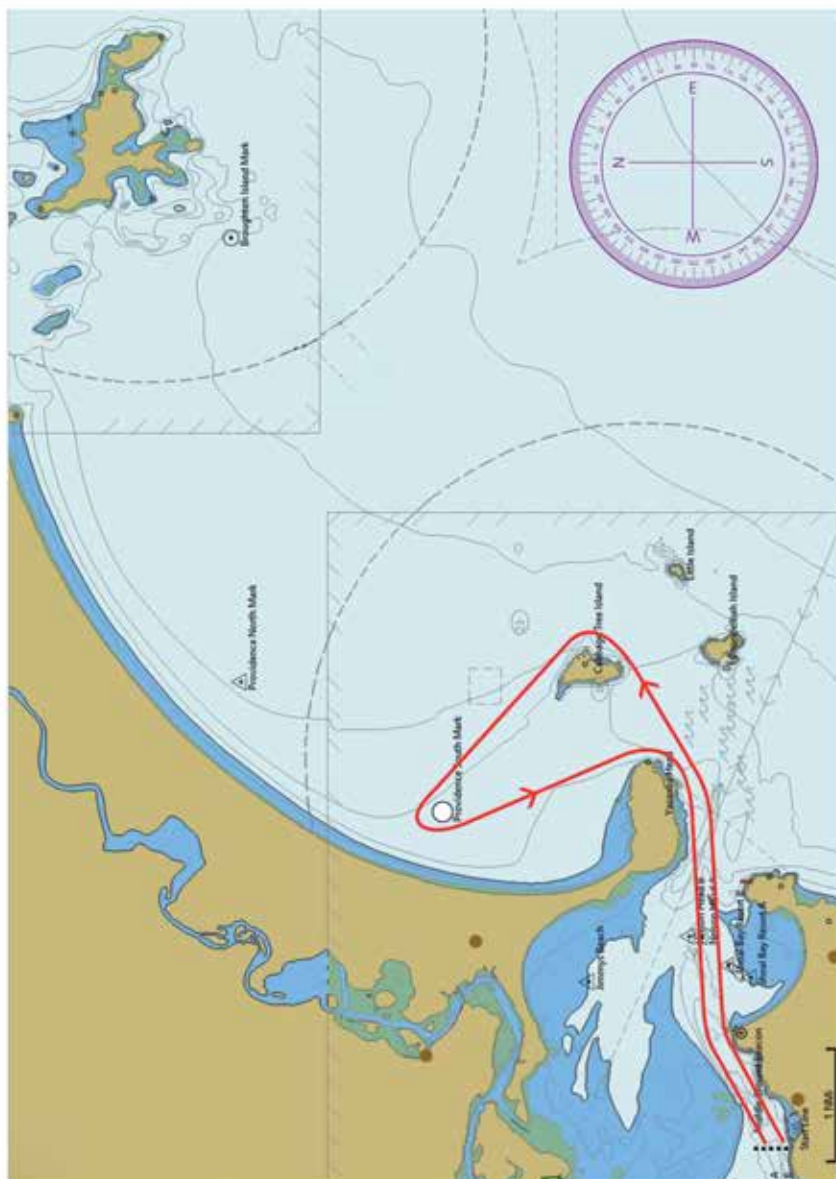
Course	Passage 11
Length	25.1 NM
Description	START - Cabbage Tree Island (P) - Broughton Island Mark (P) - Providence North Mark (P) - Providence South Mark (P) - FINISH



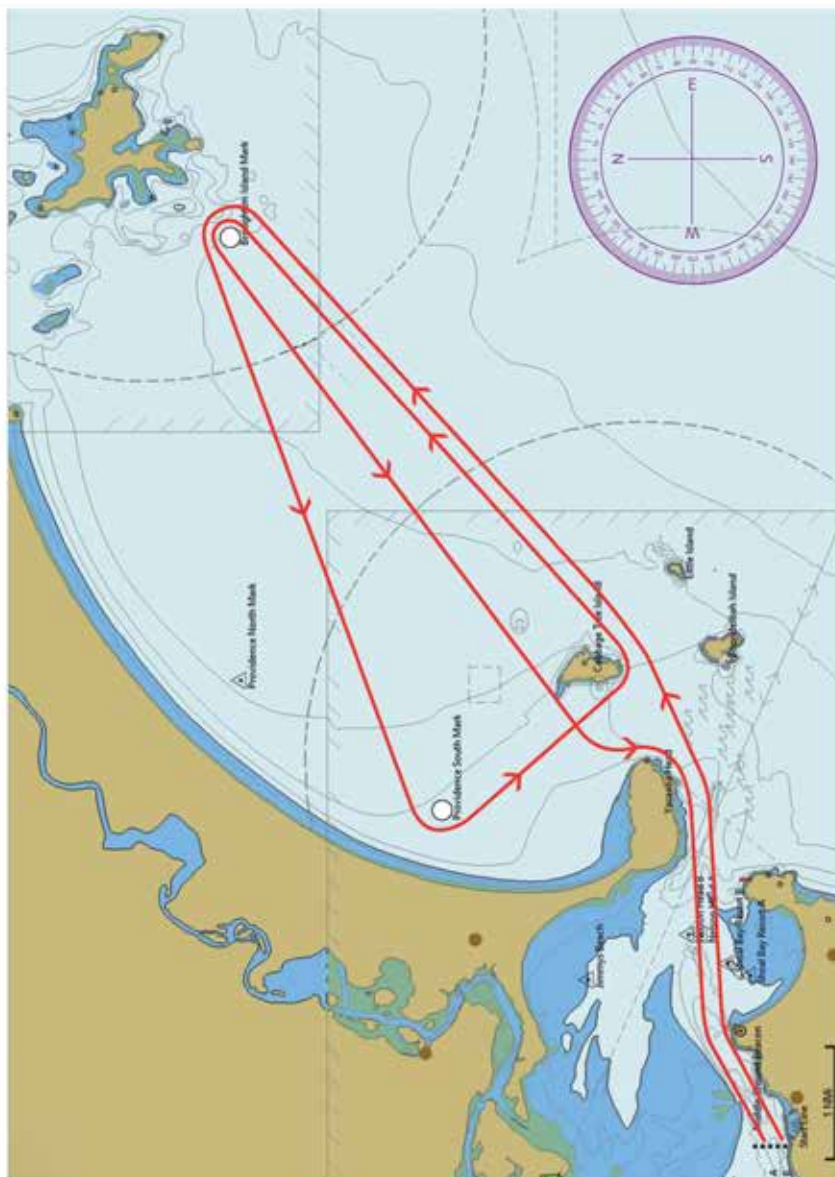
Course	Passage 12
Length	18.8 NM
Description	START - Cabbage Tree Island (P) - Providence North Mark (P) - Providence South Mark (P) - FINISH



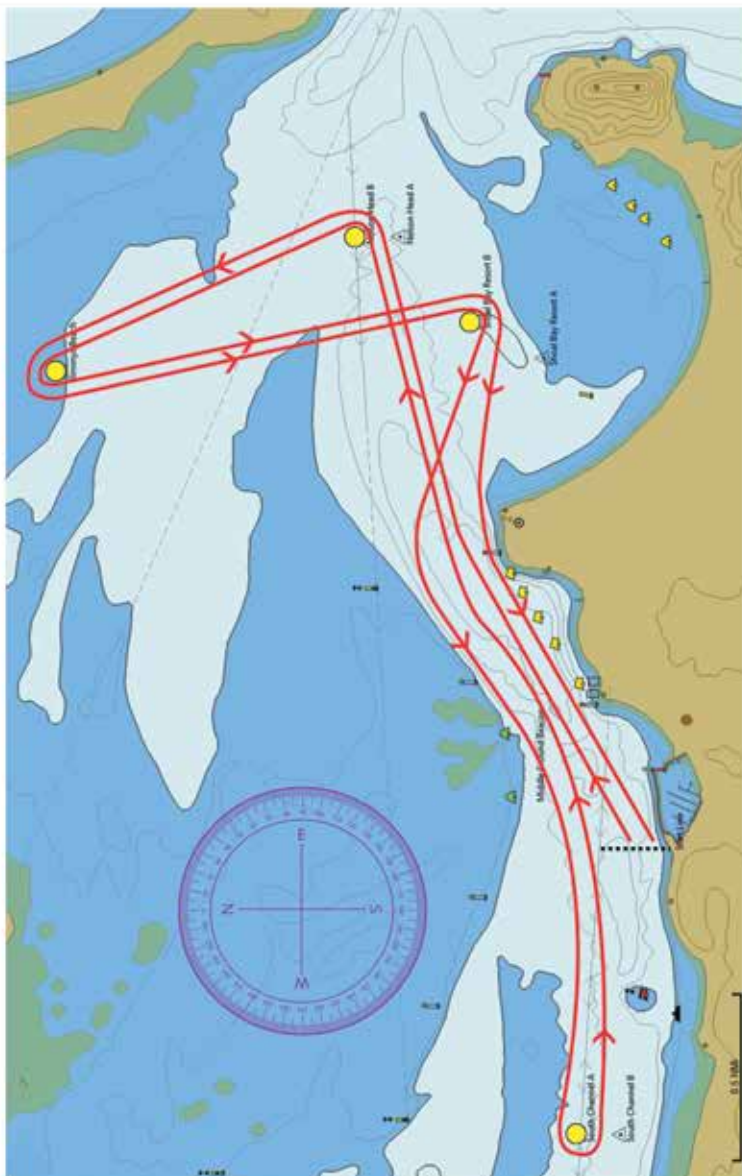
Course	Passage 13
Length	15.1 NM
Description	START - Cabbage Tree Island (P) - Providence South Mark (P) - FINISH



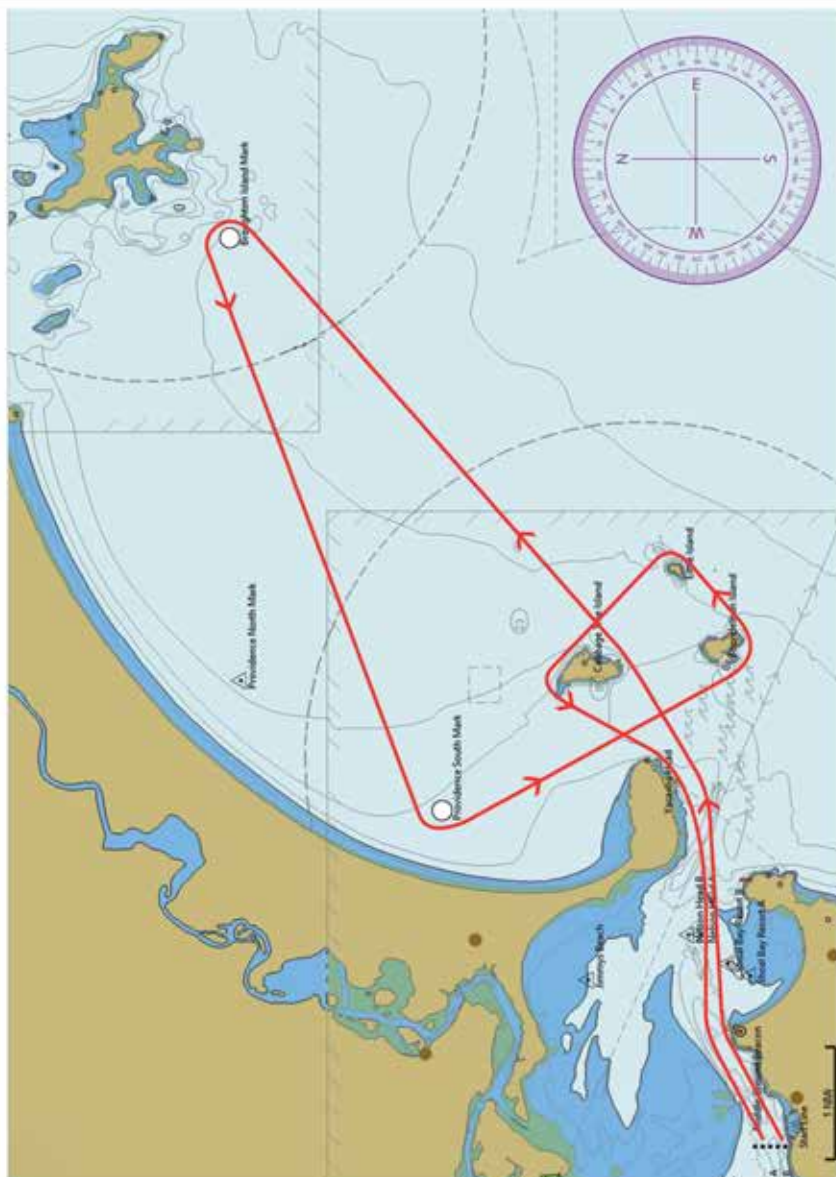
Course	Passage 14
Length	30.7 NM
Description	START - Cabbage Tree Island (P) - Broughton Island Mark (P) - Providence South Mark (P) - Cabbage Tree Island (P) - Broughton Island Mark (P) - FINISH



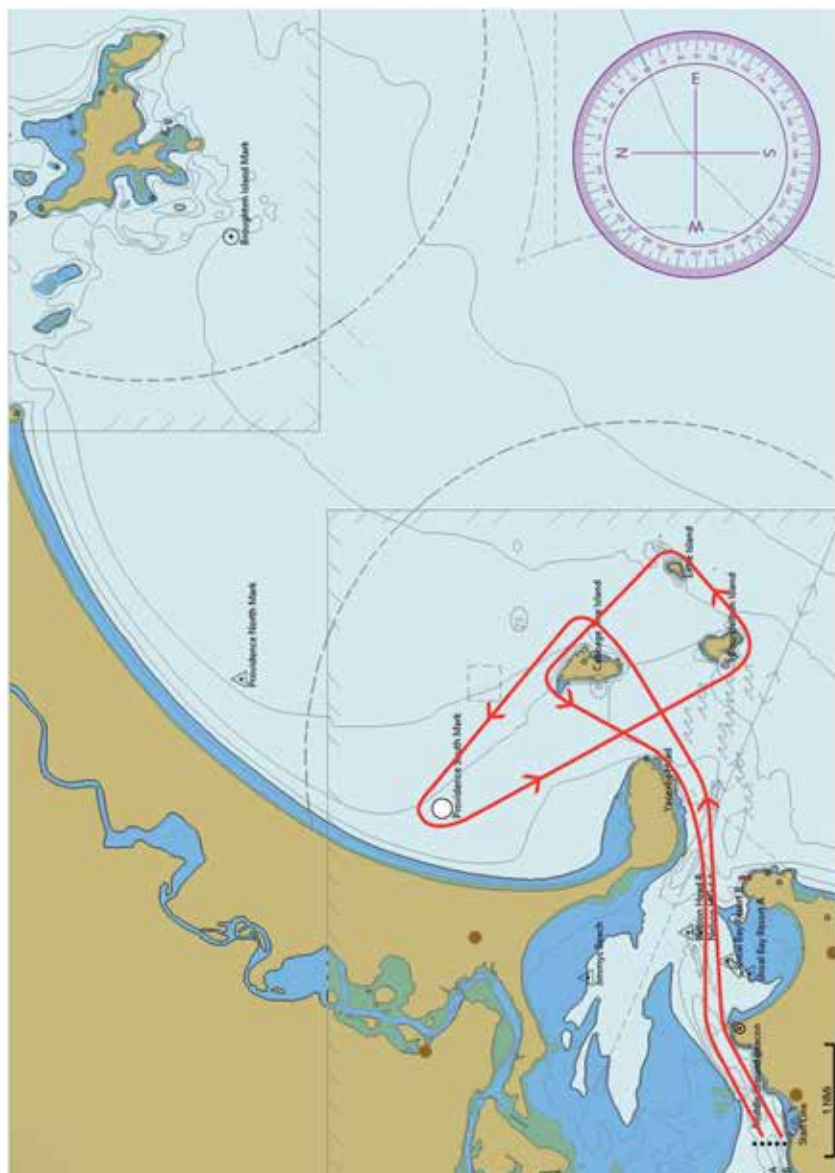
Course	Passage 15
Length	15.5 NM
Description	START - Nelson Head B (P) - Jimmys Beach (P) - Shoal Bay Resort B (S) - South Channel Mark A (P) - Nelson Head B (P) - Jimmys Beach (P) - Shoal Bay Resort B (S) - FINISH



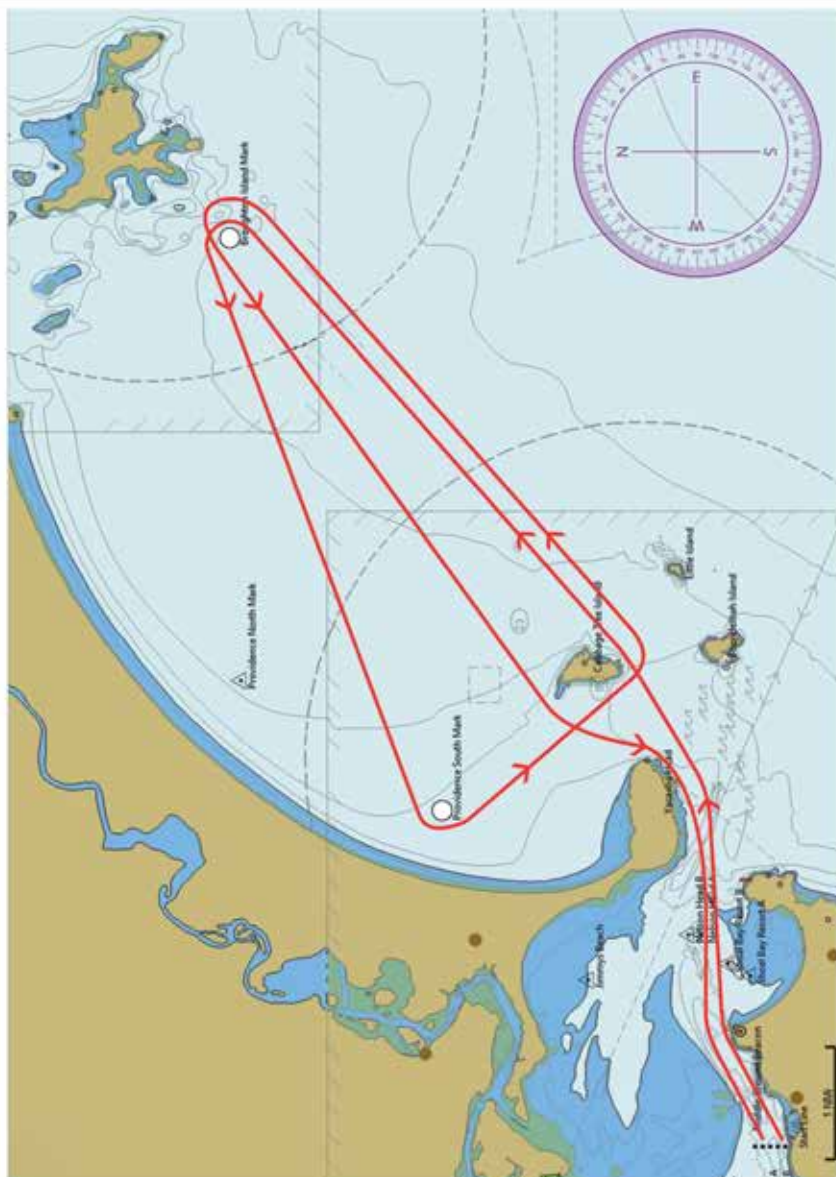
Course	Passage 16 'A'
Length	23.0 NM
Description	START - Cabbage Tree Island (P) - Broughton Island Mark (P) - Providence South Mark (P) - Boondelbah Island (P) - Little Island (P) - Cabbage Tree Island (P) - Yacaaba Head (S) - FINISH



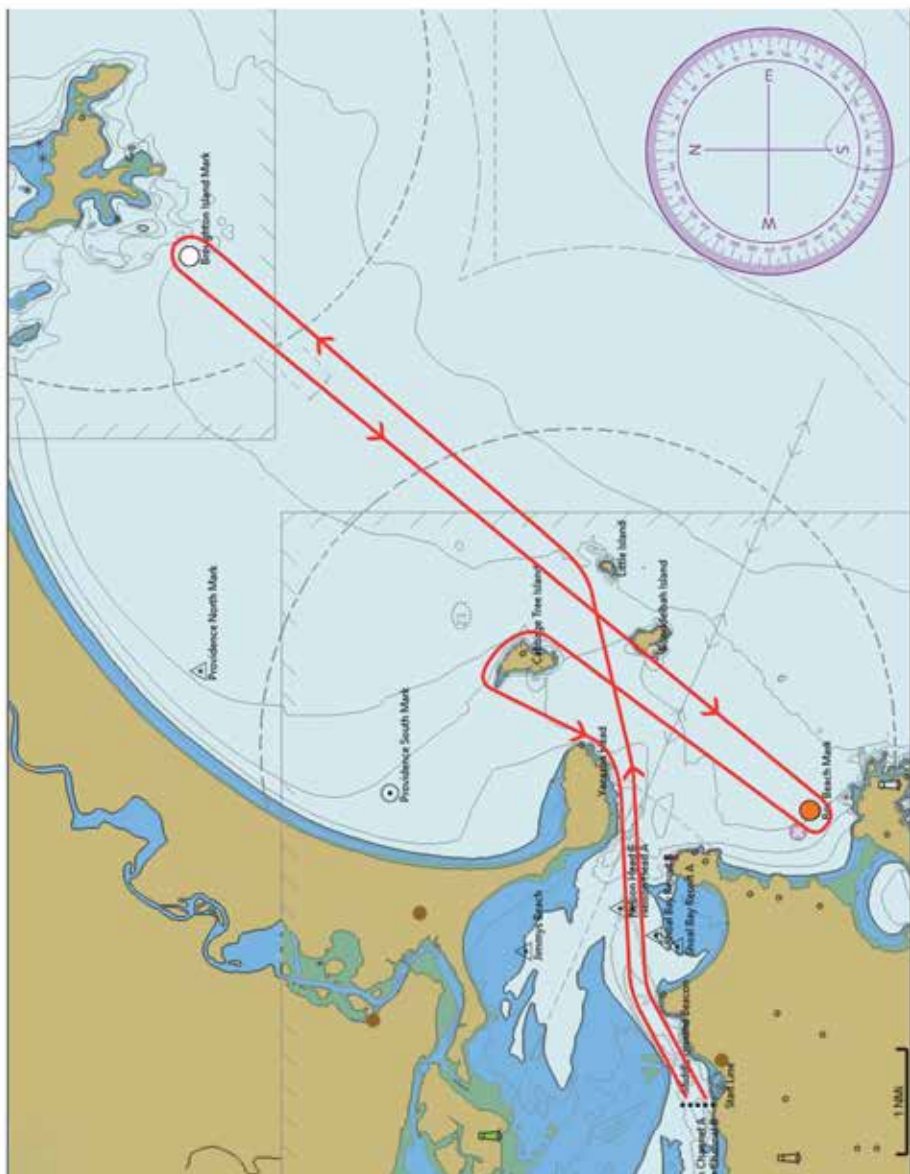
Course	Passage 16 'B'
Length	15.0 NM
Description	START - Cabbage Tree Island (P) - Providence South Mark (P) - Boondelbah Island (P) - Little Island (P) - Cabbage Tree Island (P) - Yacaaba Head (S) - FINISH



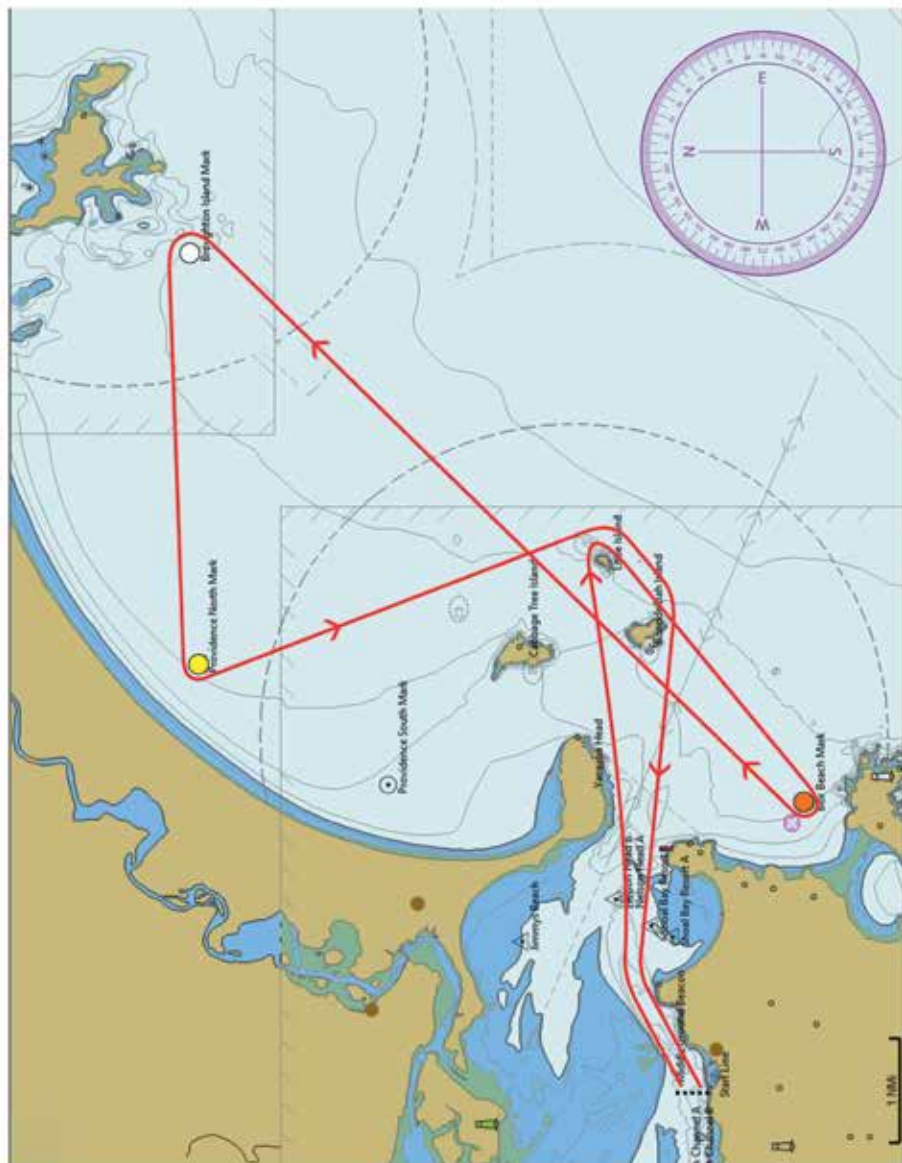
Course	Passage 17
Length	35.8 NM
Description	START - Cabbage Tree Island (P) - Broughton Island Mark (P) - Providence South Mark (P) - Cabbage Tree Island (P) - Broughton Island Mark (P) - FINISH



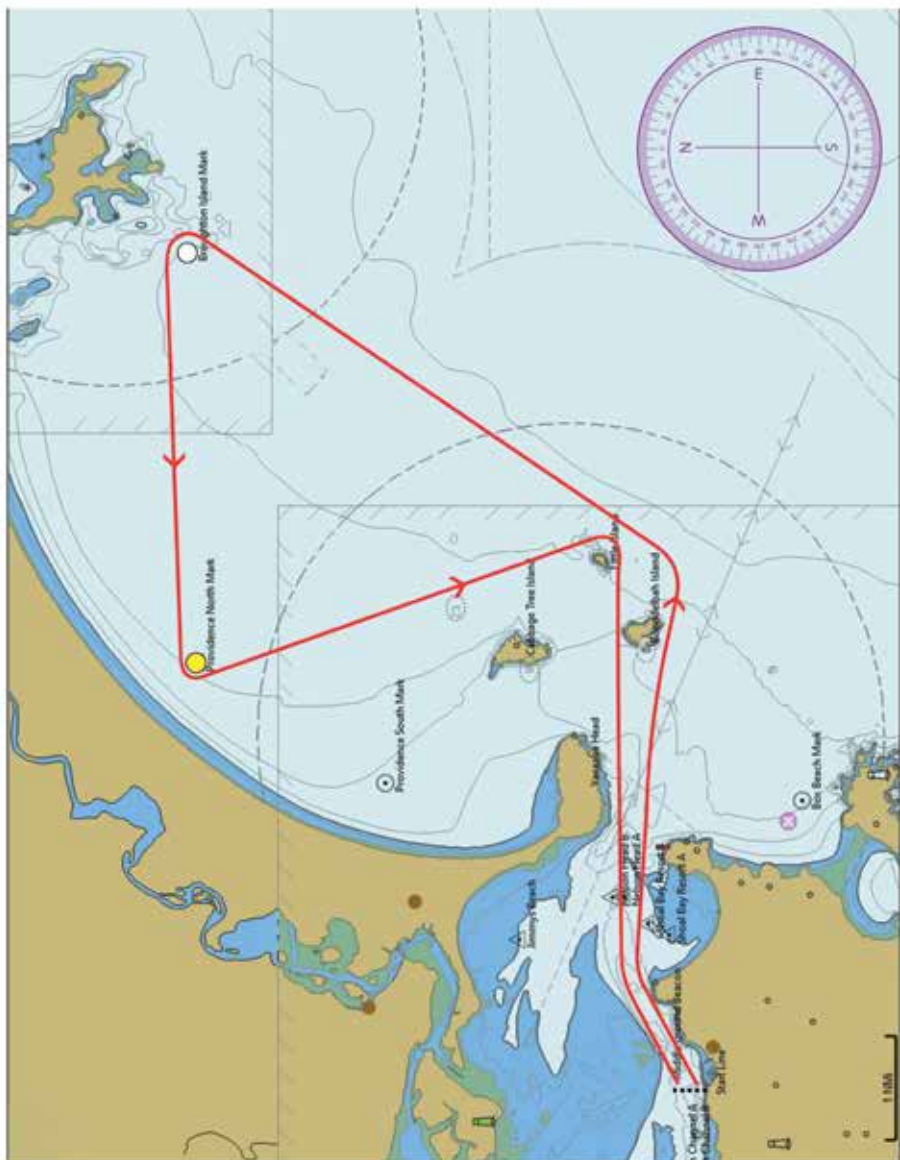
Course	Passage 18
Length	28.7 NM
Description	START - Cabbage Tree Island (P) - Broughton Island Mark (P) - Box Beach Mark (S) - Cabbage Tree Island (P) - FINISH



Course	Passage 19
Length	32.7 NM
Description	START - Little Island (S) - Box Beach Mark (S) - Broughton Island Mark (P) - Providence North Mark (P) - Little Island (S) - Boondelbah Island (S) - FINISH



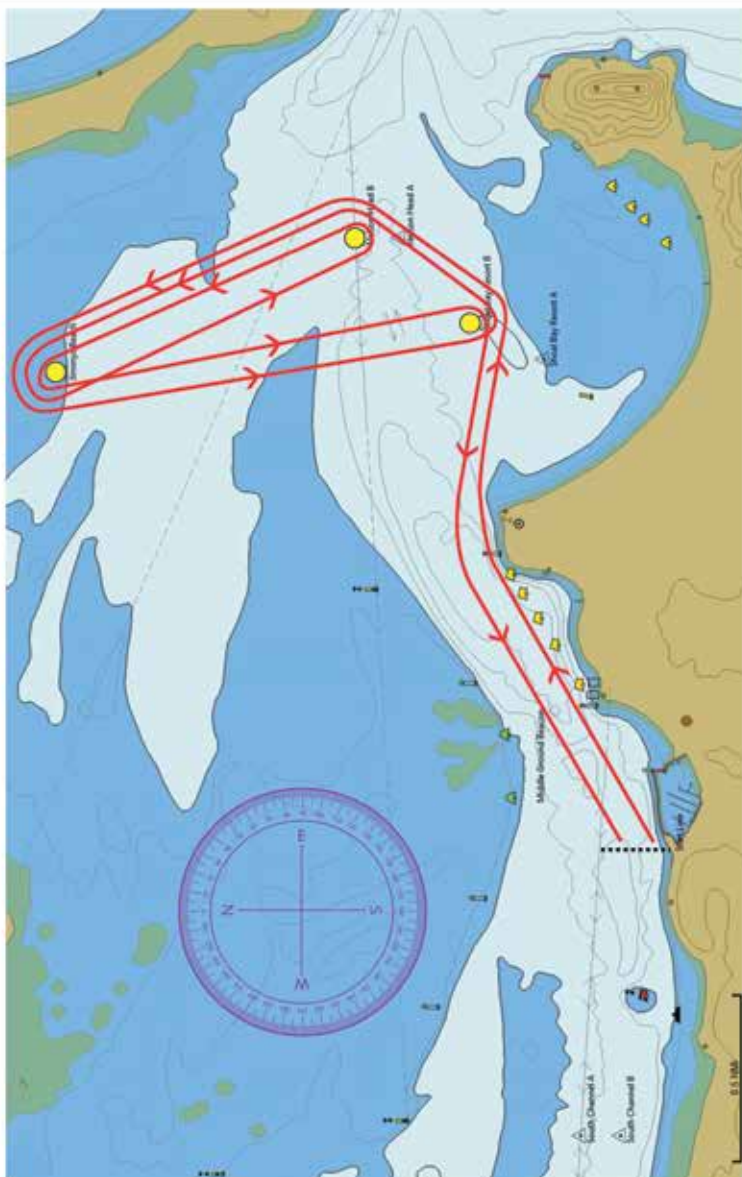
Course	Passage 20
Length	25.9 NM
Description	START - Boondelbah Island (P) - Broughton Island Mark (P) - Providence North Mark (P) - Little Island (S) - FINISH



Course	Passage 22
Length	12.4 NM
Description	START - Corlette Mark (S) - Pindimar Mark (S) - Corlette Mark (S) - Pindimar Mark (S) - West Bank (P) - FINISH



Course	Passage 23
Length	10.6 NM
Description	START - Shoal Bay Resort B (P) - Nelson Head B (P) - Jimmys Beach (P) - Shoal Bay Resort B (P) - Nelson Head B (P) - Jimmys Beach (P) - Nelson Head B (P) - Jimmys Beach (P) - Shoal Bay Resort B (S) - FINISH



Passage Series Social

A regatta village on the promenade of d'Albora Marina Nelson Bay is the social hub for the Sail Port Stephens Passage Series.

SUNDAY 12 APRIL

Registration desk open 2-5pm
NCYC race prizes

MONDAY 13 APRIL

Registration 8.30 – 10am
Briefing 9am
Passage Race 1 from 10.55am
PS Council Welcome Party
Live music from 4pm with daily results and prizes approx 5pm

TUESDAY 14 APRIL

Briefing 9am
Passage Race 2 from 10.55am
Daily results & prizes from 5pm approx
Mount Gay Sunset Drinks
Live entertainment

WEDNESDAY 15 APRIL

Briefing 9am
Passage Race 3 from 10.55am
Daily prizes ASAP after sailing
Sail Port Stephens Street Party 5-10pm Nelson Bay
Dress code: 'Chic Coastal'
Live band: Love That Hat

Registration:

Race HQ during the Passage Series is the regatta village at d'Albora Marina Nelson Bay

Sunday, 12 April: 2 – 5pm

Monday, 13 April: 8.30 – 10am

Briefings: 9am daily with updates to skippers via SMS.

THURSDAY 16 APRIL

Lay Day (spare racing day)
Country-theme party at Mavericks
Mount Gay Rum Lunch

FRIDAY 17 APRIL

Briefing 9am
Passage Race 4 from 10.55am
Pantaenius party
Daily results and prizes 4pm approx
Live entertainment from 4pm

SATURDAY 18 APRIL

Briefing 9am
Passage Race 5 from 10.55am
Heineken party from 6-10pm
Prize presentation from 7pm
Live entertainment

Part B: Windward/Leeward Courses

The marks listed in the table below define the mark descriptions to be used in windward/leeward courses:

COURSE MARK	MARK DESCRIPTION	CHANGE MARK
Mark 1	Orange	Yellow
Mark 2	White	Red
Gate	Orange	
Start/Finish	Black/White Check	

Windward/Leeward Courses:

COURSE	Course to Sail (All marks, except the gate, to be rounded to Port)
WL1	START- Mark 1- FINISH
WL2	START- Mark 1- Gate - Mark 1- FINISH
WL3	START- Mark 1- Gate - Mark 1- Gate - Mark 1-FINISH
WL4	START- Mark 2 - FINISH
WL5	START- Mark 2 - Gate - Mark 2 - FINISH
WL6	START- Mark 2 - Gate - Mark 2 - Gate - Mark 2 - FINISH

Mark 1



Mark 2



Approximate
Wind Direction



Gate



START / FINISH



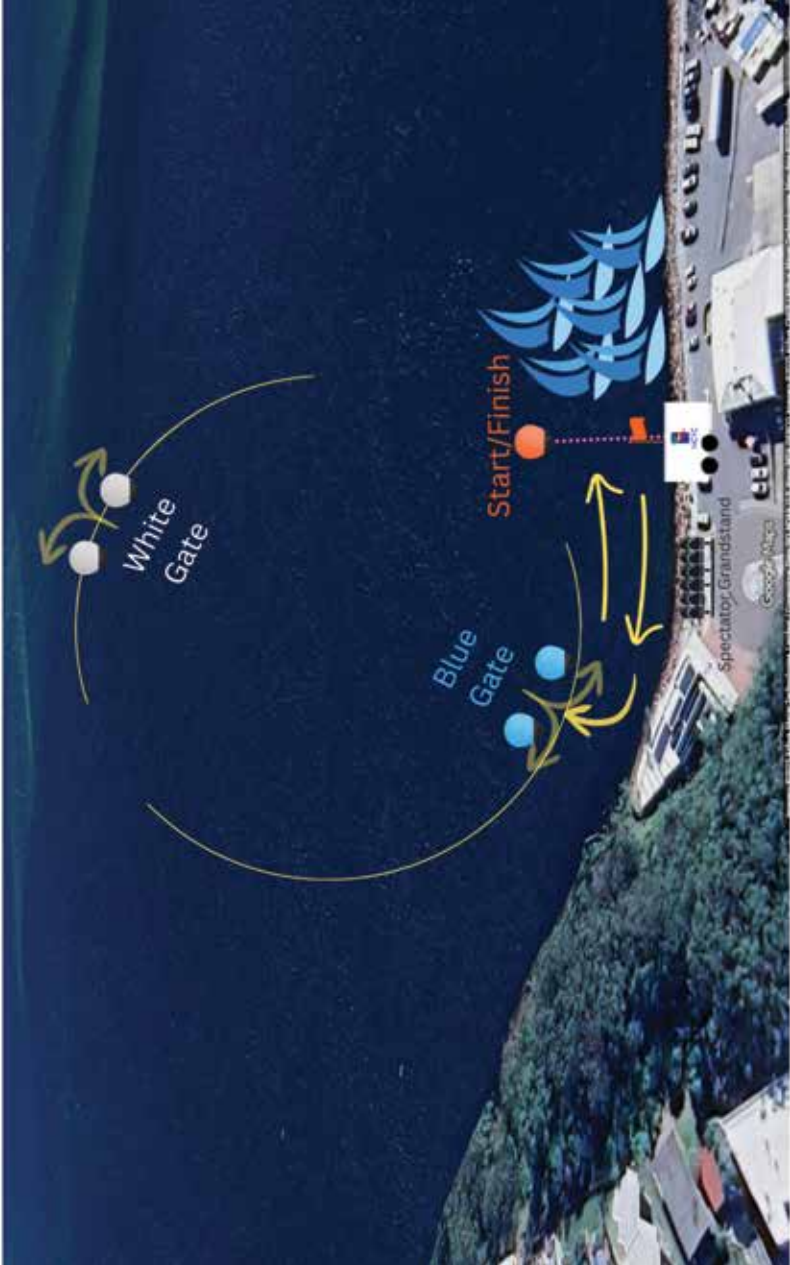
Part C: Sprint Course configurations

The marks listed in the table below define the mark descriptions to be used in windward/leeward courses:

COURSE MARK	MARK DESCRIPTION
White Gate	White
Blue Gate	Blue
Start/Finish	Orange





Course	Course to Sail
Sprint 1	START- Blue Gate -White Gate - Blue Gate - FINISH
Sprint 2	START- Blue Gate -White Gate - Blue Gate - White Gate - Blue Gate - FINISH
Sprint 3	START- Blue Gate -White Gate - Blue Gate - White Gate - Blue Gate - White Gate - Blue Gate - FINISH

Sprint Course configuration example



Media

The easiest ways to keep in touch with the latest racing and event news from Sail Port Stephens is via our website and social media sites:

-  sailportstephens.com.au
-  facebook.com/sailportstephens
-  instagram.com/sailportstephens
-  youtube.com/@sailportstephens2958

Results: sailportstephens.com.au/results/

Series information: sailportstephens.com.au/

Social calendar: sailportstephens.com.au/social/a-month-of-fun/

Handy contacts:

Tomaree Community Hospital: 4984 0700 | Trevally Street Nelson Bay

Diggers Nelson Bay Taxis: 4032 7999 | **Airport Transfers:** 4984 7766

Port Stephens Coaches: 4982 2940 | pscoaches.com.au

Shipwrights: d'Albora Nelson Bay 1800 32 52 672

Sail Repairs: Scott Beeby on 0410 349 150 | 4961 1663

Marinas:

d'Albora: 1800 32 52 672 | **Anchorage:** 4981 4975 | **Soldiers Pt:** 4982 7445

Quality crew gear

Quality Marine Clothing has a range of Sail Port Stephens merch.
See sailportstephens.com.au/crew-clothing/

Sustainability

Sail Port Stephens is committed to conducting events in an environmentally responsible manner and protecting the unique marine environment of Port Stephens.

We encourage all competitors, crew and support teams to contribute to a more sustainable event by adopting the following practices both on and off the water:

On the Water

- All waste shall be retained on board and disposed of ashore.
- Minimise single-use plastics. Use reusable drink bottles and food containers wherever possible.
- Secure loose items. Prevent items such as tape, packaging, or equipment from entering the water.
- Respect marine life. Avoid interaction with dolphins, seals and other wildlife encountered during racing.

Ashore

- Dispose of waste correctly. Use designated recycling and general waste bins provided at the marina.
- Avoid spills. Take care when refuelling and handling oil, fuel and chemicals.
- Use environmentally friendly products. Where possible, use biodegradable cleaning products.
- Keep the marina clean. Do not leave items, rubbish or materials on docks or pontoons.

We appreciate the support of all competitors in helping to protect our waterways and ensure the long-term sustainability of sailing in Port Stephens.

Port Stephens tides and sunsets

Date	Tides
13 April	H: 0440 (1.50m) L: 1125 (0.44m) H: 1744 (1.32m) L: 2319 (0.64m) Sunrise: 0611 Sunset: 17.33
14 April	H: 0533 (1.56m) L: 1203 (0.39m) H: 1821(1.45m) Sunrise: 0611 Sunset: 17.31
15 April	L: 0011(0.53) H: 0621(1.60m) L: 1240 (0.34m) H: 1858 (1.59m) Sunrise: 0612 Sunset: 17.29
16 April	L: 0059 (0.42m) H: 0707 (1.62m) L: 1317 (0.31m) H: 1935 (1.71m) Sunrise: 0613 Sunset: 17.28
17th April	L: 0147 (0.33m) H: 0753 (1.61m) L: 1355 (0.30m) H: 2016 (1.80m) Sunrise: 0613 Sunset: 17.27
18 April 2026	L: 0236 (0.27m) H: 0839 (1.57m) L: 1435 (0.32m) H: 2058 (1.87m) Sunrise: 0614 Sunset: 17.26

Date	Tides
24 April	H: 0134 (1.68m) L: 0844 (0.38m) H: 0259 (1.20m) L: 0817 (0.68m) Sunrise: 0618 Sunset: 17.19
25 April	H: 0247 (1.63m) L: 0949 (0.37m) H: 1609 (1.28m) L: 2137 (0.66m) Sunrise: 0619 Sunset: 17.18
26 April	H: 0358 (1.60m) L: 1043 (0.36m) H: 1704 (1.38m) L: 2246 (0.60m) Sunrise: 0620 Sunset: 17.17
1 May	L: 0200 (0.39m) H: 0755 (1.43m) L: 1346 (0.39m) H: 2013 (1.76m) Sunrise: 0623 Sunset: 17.12
2 May	L: 0240 (0.38m) H: 0832 (1.36m) L: 1417 (0.41m) H: 2047 (1.77m) Sunrise: 0624 Sunset: 17.11
3 May	L: 0320 (0.38m) H: 0909 (1.30m) L: 1448 (0.46m) H: 2121 (1.75m) Sunrise: 0625 Sunset: 17.10



that
**TOOK A WRONG
TURN AND LEFT
PLANET EARTH**
feeling

In Port Stephens

visitnsw.com

feel new south wales

